



Website of CAMCE

中工国际工程股份有限公司 CHINA CAMC ENGINEERING CO., LTD.

中国北京市海淀区丹棱街3号 邮编100080
No.3 Danling Street, Haidian District Beijing 100080, China
Tel:86-10-82688866 Fax:86-10-82688588/82688688
E-mail:camce@camce.com.cn

中工国际工程股份有限公司 CHINA CAMC ENGINEERING CO., LTD.



www.camce.com.cn



Words of Chairman

As an important affiliate enterprise of China National Machinery Industry Corporation, with the mission of "creating Chinese engineering value and building a better life for mankind", CAMCE is committed to becoming an excellent engineering leader with international competitiveness, integration of science, industry and trade, and full value chain operation of investment, construction and operation.

As a client-centered and value-creation oriented enterprise, CAMCE insists on its culture of practicability and enterprise, innovation-driven development and pursuit of excellence. CAMCE actively implements the "the Belt and Road" initiative with its leading strategy, advanced technology and professional services, by participating in national key regional economic development strategies for the coordinated development of the Beijing-Tianjin-Hebei region, the integrated development of Yangtze River Delta region, Guangdong-Hong Kong-Macao Greater Bay Area, and Hainan Free Trade Port. With the intention of improving the public wellbeing and creating economic and social value, CAMCE provides its clients with high-quality, sustainable, technologically advanced and green projects, promotes the improvement of people's livelihood and constantly creates economic and social value.

This great vision can only be achieved through action. CAMCE is willing to work with global clients and partners to share the development opportunities of the new era, and work together to create a better future!

CAMCE Chairman: Bo Wang

Directory



Pokhara Regional International Airport Project in Nepal

Our Business

04-05

About Sinomach
Company Profile

06-36

Design Consulting and
Project Contracting

International Project Contracting
Domestic Project Contracting
Design Consulting
Trade and Service

37-44

Development and Application
of Advanced Engineering
Technology & Equipment

R & D and Manufacturing of Key Equipment
Development and Application of Advanced
Engineering Technology

45-48

Engineering
Investment and
Operation

Municipal Wastewater
Industrial Wastewater
Treatment of Solid Wastes

Technical Strength

49-55

Professional Qualifications
Expert Team
Industry influence
Standard Setting

56-57

Social Responsibilities

58-66

Domestic Branches
Overseas Branches





Company Profile

China CAMC Engineering Co., Ltd. (CAMCE, stock code: 002051) is an affiliate of China National Machinery Industry Corporation Ltd (SINOMACH).

CAMCE was founded on May 22, 2001, and listed in Shenzhen Stock Exchange on June 19, 2006. The company has 9 subsidiaries which are all high-tech enterprises. Among these subsidiaries, China IPPR International Engineering Co., Ltd. (IPPR, former Design and Research Institute of the Ministry of Machinery Industry) is one of the design consulting units with the strongest comprehensive strength in China, and has strong technical strength in medical buildings, civil buildings, industrial buildings, energy environment, logistics engineering and other fields; Beijing Materials Handling Research Institute Co., Ltd. (BMHRI) is one of the enterprises with the strongest comprehensive technical strength in China's lifting and transportation machinery industry, and plays an important leading role in the technical progress of China's material handling machinery industry. CAMCE has more than 40 domestic branches and 70 overseas branches, employing nearly 10,000 domestic and overseas employees.

In step with China's economic reform and opening-up process, and the pace of economic globalization, CAMCE has continuously grown and expanded. In the past two decades, CAMCE focuses on 3 core business: design consultation and project contracting, development and application of advanced engineering technology and equipment, and project investment and operation, CAMCE is committed to providing its clients with comprehensive service including survey and design, planning consultancy, financing and investment, equipment supply and procurement, construction and project management, operation and maintenance, etc. CAMCE has completed more than a hundred EPC turnkey projects over 70 countries and regions around the world.

About Sinomach

China National Machinery Industry Corporation (Sinomach), formerly known as the First Ministry of Machinery Industry, is a major State-owned enterprise directly managed by the central government. Sinomach has built itself on around 70 research and design institutes, equipment manufacturing and industrial and trade enterprises it took over from its predecessor. Sinomach has more than 130,000 employees, over 28 wholly owned or majority-owned subsidiaries, and 13 listed companies. It is a Fortune Global 500 enterprise and has ranked first among the top 100 enterprises in China's machinery industry for many years.

Sinomach is an international, diversified, comprehensive industrial equipment company, committed to providing quality services globally and building a world-class enterprise driven by science and technology. The company focus on 3 major businesses, namely scientific and technological research and service, advanced equipment manufacturing, engineering contracting and supply chain, and focus on the development of 8 business sectors, including industrial basic research and development, high-end heavy equipment, high-end agricultural and forestry geological equipment, high-end textile equipment, design consulting and engineering contracting, supply chain integration services, automobile and exhibition, and industrial-financial investment. It also actively foster emerging businesses in energy conservation, environmental protection and new energy. Its services cover such critical national economic fields as machinery, energy, transportation, automobiles, ship building, metallurgy, construction, electronics, environmental engineering, aeronautics and astronautics, and light industry. The company is present in five continents, with more than 300 overseas service agencies in over 100 countries and regions.



Information disclosure has been awarded the highest rating by Shenzhen Stock Exchange for consecutive years
ESG of Central-Controlled Listed Companies Governance
Pioneer 50 Index

Top 100 ESG Listed Companies in China

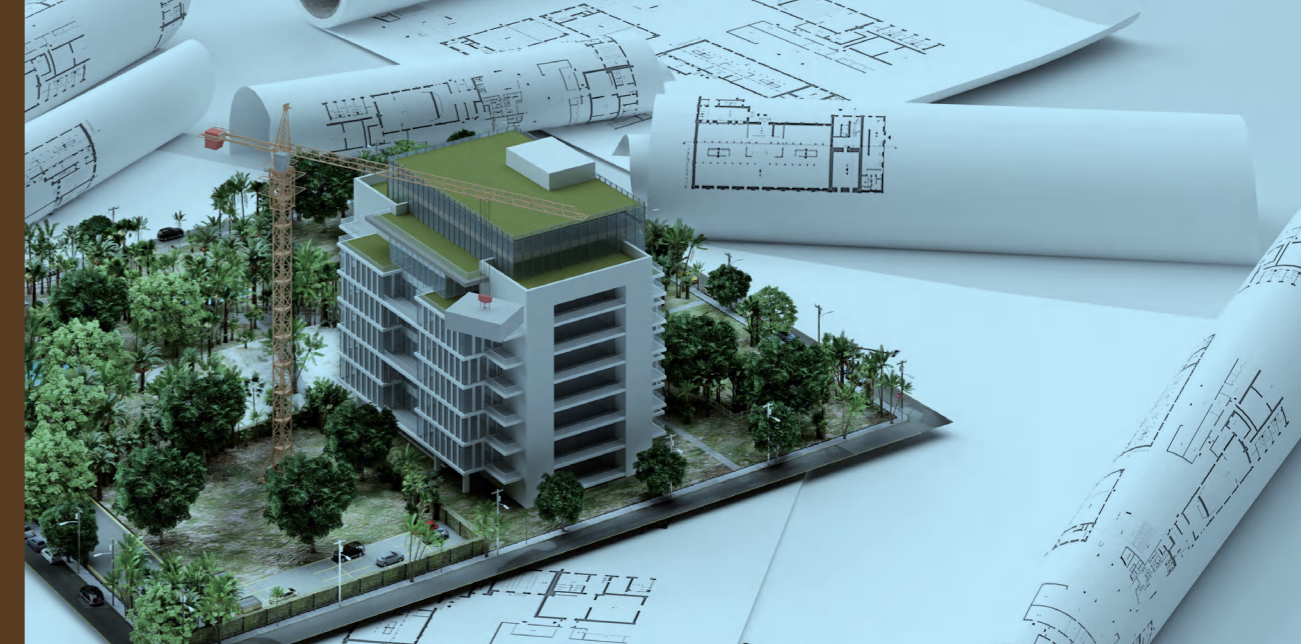
ROUND TABLE AWARD for the Board of Directors of Chinese Listed Companies

Leading Enterprise in Social Responsibility

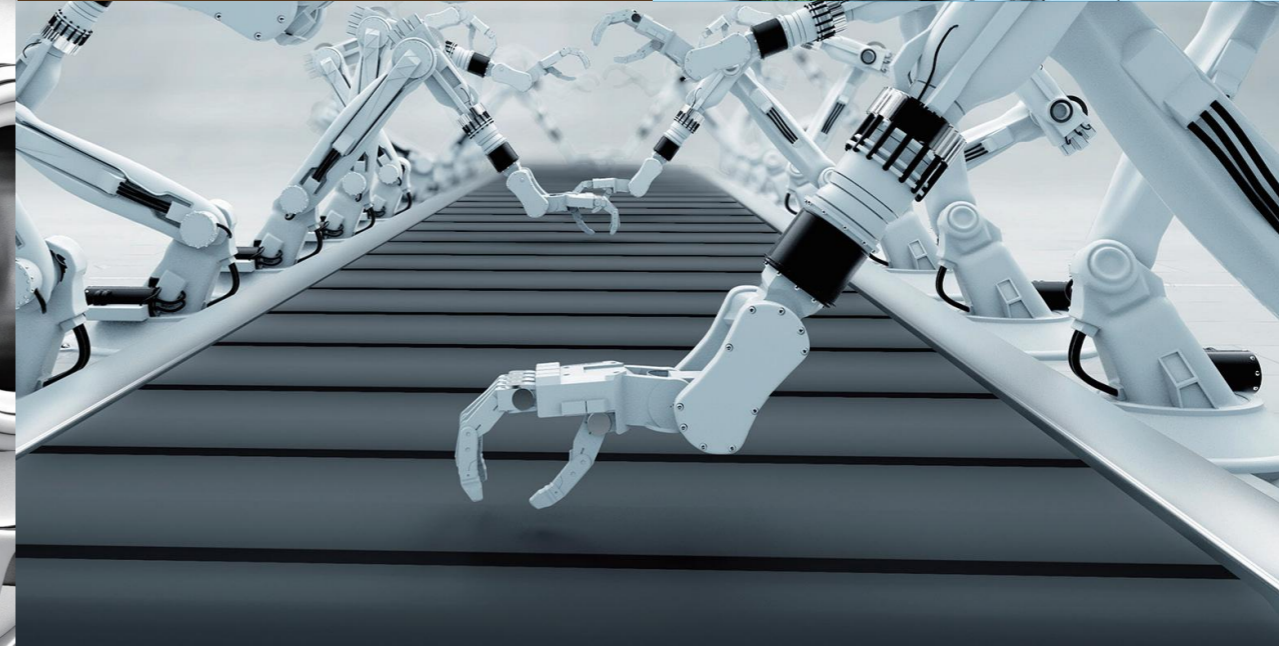
Our Business



Design consulting
and
Project contracting



Development and
Application of
Advanced Engineering
Technology & Equipment



Investment &
operation





▲ San Buenaventura Sugar Project in Bolivia (Luban Prize for Overseas Projects)



▲ 400,000t/a Bleached Kraft Pulp Plant Project in Belarus (including viscose pulp)

▼ Burapha plywood mill project in Laos

Design consulting and
Project contracting

International
project contracting

Industry-Light industry

- Welkait 24,000TCD Sugar Factory in Ethiopia
- Remaining Construction of Beles-1 12,000TCD Sugar Factory in Ethiopia
- San Buenaventura Sugar Project in Bolivia
- Komering Sugar Mill in Indonesia
- Jigawa State Sugar Factory in Nigeria
- Yone Seik Cane Sugar Mill in Myanmar

- Okkan Cane Sugar Mill in Myanmar
- Binh Dinh Sugar Mill in Vietnam
- Biorefinery Plant in Belarus
- Burapha plywood mill project, Laos
- Sarlingyi Spinning & Weaving Factory Project, Myanmar
- Rehabilitation of Textile Factory in Sana'a, Yemen





▲ Bolivia Uyuni Potash Plant (annual output of 350,000 tons, Luban Prize for Overseas Projects)

Polyvinyl Chloride (PVC), Caustic Soda and Methanol Production Complex in Uzbekistan (100 thousand tons of polyvinyl chloride, 75 thousand tons of caustic soda and 300 thousand tons of methanol per year) ▼



▲ Turkey Tuz Golu Underground Gas Storage Expansion Plant (storage capacity: 4 billion cubic meter, daily withdraw capacity: 40 million cubic meter, daily injection capacity: 30million cubic meter)

▼ Petroleum Products Distribution Tank Farm in Nicaragua (170,000 cubic meters of petroleum products storage and distribution plant)

▼ EPCC of CPF-Oil Treatment System and Auxiliary Systems Project for Block 9 in Iraq

Industry-Petrochemical Engineering

- EPCC of CPF-Oil Treatment System and Auxiliary Systems Project for Block 9 in Iraq
- EPCC of CPF-Gas Treatment System and Auxiliary Systems Project for Block 9 in Iraq
- Kazakhstan Sozak Natural Gas Comprehensive Development Project
- Turkey Tuz Golu Underground Gas Storage Expansion Plant
- Petroleum Products Distribution Tank Farm in Nicaragua
- Expansion Project of BZ Tank Farm in Port Corindo in Nicaragua
- Oil Rig Procurement Project in Bolivia

Design consulting and Project contracting

International project contracting

Industry-Chemical Engineering

- Bolivia Uyuni Potash Plant (Luban Prize for Overseas Projects)
- 500,000 per Year Soda Ash Plant Project in Zhambyl Region Kazakhstan
- Polyvinyl Chloride (PVC), Caustic Soda and Methanol Production Complex in Uzbekistan
- JSC Navoiyazot Nitric Acid Production Plant Navoiy Region, Uzbekistan
- 500,000t/y Coking Project of UGML Company in India
- Radial Tyre Manufacturing Project in Myanmar
- Liquid Air Separation Equipment Project in Sudan



▼ Radial Tyre Manufacturing Project in Myanmar



**Design consulting and
Project contracting**

**International
project contracting**

Industry- Building materials

- 2500t/d Cement Plant in Southern Kyrgyzstan
- Gas-to-Coal Project of Cement Plant in Kant, Kyrgyzstan
- Clinker Line Project in Bekobod, Tashkent in Uzbekistan (Production of 2500 tons per day)
- Yangi-ul 3300t/d Cement Grinding Project in Uzbekistan
- Cement Plant in Baoare, Chad
- Cement Plant in Kyaukse, Myanmar
- Float Glass Plant Project in Myanmar

Industry- Mechanical engineering

- Agricultural and Sideline Products Processing Equipment Manufacturer Industrial Park Project in Venezuela
- Production of Specialized Equipment ZOOMLION in the China-Belarus Industrial Park
- Construction of the plant for the production of internal combustion engines



▲ Clinker Line Project in Bekobod, Tashkent in Uzbekistan (Production of 2500 tons per day)

▼ Agricultural and Sideline Products Processing Equipment Manufacturer Industrial Park Project in Venezuela



▲ Forrest Kerr Hydroelectric Project in Canada (Underground rock development works of Approximately 6,300m of tunnels and a 64,000m³ powerhouse)

▼ Ekati Diamond Mine Project in Canada

Mining and Underground engineering

- Forrest Kerr Hydroelectric Project in Canada
- Ekati Diamond Mine Project in Canada
- Brucejack Gold Mine Project in Canada
- PCS—Allan Mine Underground Potash Project in Canada
- Concentration mill of gold mine in Guinea



Design consulting and
Project contracting

International
project contracting



▲ Don Luis Zambrano Combined Cycle Power Plant in Venezuela (Total installed capacity 597MW based on the ISO case consuming natural gas)



▲ Lom Pangar Hydropower Station in Cameroon

▼ Genale Dawa-III - Yirgalem-II - Wolayita Sodo-II - Hawassa-II Power Transmission Project, Contract GDYWH-1: Supply and Construction of Yirgalem-II 400/230/132 kV Substation and Supply of Substation Equipment for Hawassa-II 230/132/15 kV Substation

Power-Plant

- Don Luis Zambrano Combined Cycle Power Plant and its associated transmission system outside of the plant in Venezuela
- Lom Pangar Hydropower Station in Cameroon
- Taishir 11MW Hydropower Project in Mongolia
- 90 Units MTU Diesel Gensets for 200 MW Power Plant in Cuba
- CENEPA Rural Electrification System in the Amazon Region of Peru

Power-Transmission and Distribution

- Bahir Dar - Debre Markos - Addis Ababa Power Transmission Project in Ethiopia
- Contract Lot-2 "Substation Equipment and Civil Works"
- Addis Ababa Transmission & Distribution System Rehabilitation & Upgrading Project (AATDRUP) (Package - IIIa)
- Genale Dawa-III - Yirgalem-II - Wolayita Sodo-II - Hawassa-II Power Transmission Project, Contract GDYWH-1: Supply and Construction of Yirgalem-II 400/230/132 kV Substation and Supply of Substation Equipment for Hawassa-II 230/132/15 kV Substation
- Electricity Network Reinforcement and Expansion Project-Transmission and Substation Rehabilitation Upgrading Component for Six Substations

- Tekeze-Indasle-Humera 230kV Power Transmission Project in Ethiopia
- Contract TIH-2 Supply of Transmission Line Materials
- Design, Manufacture, Supply, Construction, Erection, Testing and Commissioning of Hawassa II 230/132/33/15 kV Substation
- Electrical Power Distribution Works for 10000ha Irrigation Scheme of Welkait Sugar Project in Ethiopia
- Bedele-Metu 230kV Power Transmission Project in Ethiopia
- Contract BM-2 Supply of Transmission Line Materials
- Electricity Network Reinforcement And Expansion Project (ENREP), Transmission And Substations Rehabilitation And Upgrading Component Contract-H, Procurement of Plant Design, Supply, Installation, Testing and Commissioning of Lot-2 "Installation of 230kV Line Bays at Combolcha-II and Legetafo Substations"
- Kenya Power Transmission System Improvement Project: Lot 1& Lot 2 Completion
- Kenya Mariakani 400/220KV Substation Project
- Kenya Power Distribution System Modernization And Strengthening Project phase II (Lot2)

- Kenya Power Transmission System Improvement Project Lot 3A&3B
- Re-design, Construction and Commissioning of Sabaki River Crossing Section for Malindi-Garsen 220KV Transmission line
- Engineering, Procurement, Installation and Commissioning of Plant of the Luzira Industrial Park, Mukono Industrial Park, Iganga Industrial Park & Namanve South Industrial Park substations & remote ends in Uganda
- Engineering, Procurement and Construction for 220kV Substation at Geita Town, 220kV Line Bay at Existing Bulyanhulu Substation and 220kV Double Circuit Overhead Transmission Line from Bulyanhulu to Geita
- NKT-NDB 225kV Substation Project in Mauritania
- The Expansion Project of Central-Western Transmission Line System Associated to Cojedes State in Venezuela
- Moa 220kV Substation Project in Cuba
- Sancti Spiritus 220kV Substation Project in Cuba
- Cabaiguan 110kV Substation Project in Cuba
- Panitan-Nabas 138kv Transmission Line Upgrading Project in Philippine
- San Jose-Angat 115kV Transmission Line Project in the Philippines
- Visayas Substation Upgrading Project 2, Schedule IV - Design, Supply, Installation, Testing and Commissioning of High Voltage Equipment Including Secondary Devices at Dingle Substation, in the Philippines
- Visayas Substation Upgrading Project 2, Schedule X - Design, Supply, Installation, Testing and Commissioning of High Voltage Equipment Including Secondary Devices at Barotac Viejo, San Jose & Sta. Barbara Substations, in the Philippines
- Abuyog 230KV Substation Project (Transmission Line Portion), in the Philippines
- Mangla Hydropower Station Switchyard Reconstruction Project



Design consulting and Project contracting

International project contracting

Hydraulic Engineering

- Jenelata Dam Construction Project in Indonesia
- Construction of the Misticuni Dam in Bolivia and ancillary works
- Agno River Integrated Irrigation Project in Philippines
- Chico River Pump Irrigation Project in Philippines
- Banaoang Pump Irrigation Project in Philippines
- Construction of Balbalungao Earthfill Dam Project
- The Guarico Irrigation System Rehabilitation and Construction Project in Venezuela
- The Delta Orinoco Integrated Agricultural Development Project in Venezuela
- The Tiznados Integrated Development Project in Venezuela
- The Piritu Becerra Integrated Development Project in Venezuela
- The Dredger Boat Supply and Integrated Dredging Project (phase II) in Venezuela
- The Integrated Dredging Project in the Basin of Portuguesa River in Venezuela
- Sri Lanka Gin-Nilwala Diversion Project
- Yan Oya Reservoir Project in Sri Lanka
- Mahakithula Inlet Tunnel, Mahakithula & Mhakhirula Reservoirs, Feeder Canal from Mahakethula to Mahakhirula Reservoir Project in Sri Lanka
- Yan Oya Left Bank Main Canal Project in Sri Lanka
- Malanje River Dredging Project in Angola
- Edo State Nigeria Erosion and Watershed Management Project
- Blue Nile Scheme Rehabilitation Project in Sudan
- First Frase of the Dredging Project of the River Juan Diaz in Panama



▲ Construction of the Misticuni Dam in Bolivia and ancillary works (altitude 3,700m, storage capacity of 150 million cubic meters)

▼ Agno River Integrated Irrigation Project in the Philippines



▲ Yan Oya Reservoir Project in Sri Lanka (Dam height 20m, Reservoir capacity 200 MCM)

▼ Main Canal Construction in the Guarico Irrigation System Rehabilitation and Construction Project in Venezuela



▼ Chico River Pump Irrigation Project in the Philippines





**Design consulting and
Project contracting**

**International
project contracting**

▲ Cuimba Agro-industrial Farm Project in Angola

Agricultural Engineering

- Grain Storage Shed Project (phase I) in Zambia
- Engineering-Procurement-Construction the Squat Silos (phase II) in Zambia
The Engineering, Procurement and Construction of National Food Storage Facilities Development Project on Construction of New Grain Storage Silos (phase III)
- Camacupa Agro-Industrial Farm Project in Angola
- Cuimba Agro-industrial Farm Project in Angola
- Longa Agro-industrial Farm Project in Angola
- Zimbabwe Agricultural Machinery, Equipment and Implements Procurement Project-Phase I & II
- The Delta Orinoco Integrated Agricultural Development Project in Venezuela
- Aloe Vera Juice Plant Project in Venezuela

▲ Longa Agro-industrial Farm Project in Angola

▼ Aloe Vera Juice Plant Project in Venezuela



▼ The Delta Orinoco Integrated Agricultural Development Project in Venezuela





▲ Mandalay Bridge in Myanmar (Length: 1,711m)



▲ Upgrading of Mbala - Nakonde (D1) Road (171.9km) in the Northern Province in Zambia (171.9km)

Design consulting and Project contracting

International project contracting

Transport Engineering

- The Thilawa Shipyard Project in Myanmar
- Thilawa Shipyard Phase III Project in Myanmar
- Ayeyawady Bridge (YADANAPON) in Myanmar
- Ayeyawady Bridge (PAKOKKU) Construction Project in Myanmar
- Ayeyawady Bridge (Magway) in Myanmar
- Myitkyina Bridge (Bala Mintin) in Myanmar
- Maubin bridge in Myanmar
- Nyaungdon Bridge (Bo Myat Tun) in Myanmar
- Ayeyawady Bridge (Yadana Theingya) Construction Project in Myanmar
- Ayeyarwady Bridge (Dedaye) Construction Project in Myanmar
- Bailey Bridges in Laos
- Bailey Bridge in Bangladesh
- Dhaka-Mawa Section of Southwest Road in Bangladesh
- Upgrading of Mbala - Nakonde (D1) Road (171.9km) in the Northern Province in Zambia
- General Santos Fish Port Complex Expansion/ Improvement Project in the Philippines
- Kathmandu- Terai/Madesh Fast Track (Expressway) Road Project (KTFT-5) in Nepal



▲ Thilawa Shipyard Phase III Project in Myanmar
▼ General Santos Fish Port Complex Expansion/Improvement Project in the Philippines



▲ Reconstruction of Luang Prabang International Airport in Laos (This project includes the terminal, runway, flight procedure devising etc.)

▼ Pokhara Regional International Airport Project in Nepal

- Pokhara District International Airport Project in Nepal
- Reconstruction of Luang Prabang International Airport in Laos
- Wattay International Airport Upgrading Project in Laos



Design consulting and
Project contracting

International
project contracting

Architecture

- Modern Sports Venues Construction Project of the Fourth Asian Youth Games and the Fifth Asian Youth Para Games 2025 in Tashkent
- Government's Financial Management Platform Construction Project in Ecuador
- National Security System of Command and Control Civil Work Project in Ecuador
- Ecuador Ministry of Construction Multiparks and "Houses for All" Project
- Leisure Facilities Construction Projects for National Recreation Area The Samanes in Ecuador, Phase 1A
- Malanje Youth Home Construction and Equipping Project in Angola
- Regional Hospitals Project in Guyana
- General Hospital Project in Portoviejo in Ecuador
- General Hospital Project in Monte Sinai in Ecuador
- General Hospital Project in Zofragua in Ecuador
- Chone Hospital Project in Ecuador
- Hospital Project in Esmeraldas in Ecuador
- Hospital Project in Pedernales in Ecuador
- San Martin Hospital in Junin Province of Peru

▼ San Martin Hospital in Junin Province of Peru



▲ Regional Hospitals Project in Guyana

▼ Modern Sports Venues Construction Project of the Fourth Asian Youth Games and the Fifth Asian Youth Para Games 2025 in Tashkent



▼ Government's Financial Management Platform Construction Project in Ecuador



Municipal Engineering

- Great Bolivarian Aqueduct Project in Falcon State in Venezuela
- Padma (Jashaldia) Water Treatment Plant Project in Bangladesh
- Package 2: Treated Water Pipeline under Dhaka Environmentally Sustainable Water Supply Project in Bangladesh
- Gandharbpur Water Treatment Plant in Bangladesh
- Construction and Commissioning of Storm Water Pumping Station in Bangladesh
- Vientiane Flood Drainage Channel & Pump Station Project
- Zamyn-Uud Infrastructure Improvement Project in Mongolia
- Philippine Valenzuela Sewage Interceptor System and Structures Project
- Dali Water Supply Project in Sudan
- Mazmoom Water Supply Project in Sudan



▲ Great Bolivarian Aqueduct Project in Falcon State in Venezuela

▼ Padma (Jashaldia) Water Treatment Plant Project in Bangladesh (daily treatment capacity of 450,000 tons water)



Design consulting and Project contracting

Domestic project contracting



▲ Golmud Exhibition Center project



▲ New Campus Phase I of Affiliated Hospital of Luzhou Medical College

▼ Dali Prefecture People's Hospital



▲ Shanxi Changyuanhe National Wetland Park

▼ Ecological Protection and Restoration Project of Mountains, Rivers, Forests, Fields, Lakes and Grasses in Changbai Mountains, Jilin Province

Architecture and Municipal Engineering

- Dali Prefecture People's Hospital
- Golmud Exhibition Center project
- New Campus Phase I of Affiliated Hospital of Luzhou Medical College
- New Campus of The Second People's Hospital of Haidong City
- Pilot Project of Heating and Energy Conservation by Using Industrial Waste Heat in Chifeng City
- Energy Center of Beijing Qinghe Hospital
- Heating and Pipe Network Transformation of Xiamen Huaxia Power Songyu Power Plant, SDIC
- Construction of Natural Gas Distributed Energy in Qingdao West Coast Transportation and Business District
- Expansion of the First Heating Station of TongliaoHuolinheKengkou Power Generation Co., Ltd., SPIC
- Taoxichuan Tourist Attraction Development Project of Jingdezhen (Phase II)-Energy Center
- Cold and Heat Source Supply Center of Kunming New Airport
- Comprehensive energy utilization in Yanqing Competition Zone of Beijing Winter Olympics
- Comprehensive Energy Station of Baoding Shenzhen Park Startup Zone
- Beijing Daxing International Airport Comprehensive Bonded Zone (Hebei) Phase I



▼ Cold and Heat Source Supply Center of Kunming New Airport

▼ Comprehensive energy utilization in Yanqing Competition Zone of Beijing Winter Olympics



Comprehensive Environmental Protection

- Ecological Protection and Restoration Project of Mountains, Rivers, Forests, Fields, Lakes and Grasses in Changbai Mountains, Jilin Province
- Shanxi Changyuanhe National Wetland Park



Design consulting and
Project contracting

Design consulting

Leader of Medical Architectural Design

In healthcare architecture industry, China IPPR International Engineering Co., Ltd., a subsidiary of CAMCE, owns a professional design team with the highest level of comprehensive ability in China and has provided technical services to over 600 domestic and overseas hospitals, covering all provinces in China and more than 30 countries around the world. IPPR has led or participated in the editing of over 20 design standards and specifications for China's national healthcare architecture industry, becoming the industry's standards developer and technology leader.

IPPR has been researching on the design of care facilities for seniors since 1999, and over the passing 20 years, has accumulated rich performance and engineering experience in this field. It has a team of over 150 people specialized in designing care facilities for seniors, and has altogether completed over 2 million square meters of senior care buildings with nearly 25,000 beds. IPPR directs the Senior Care Building Professional Committee of ASSC, and acts as chief editor or co-editor of over 10 national standards and specifications, and has a leading position in China's senior care and rehabilitation healthcare architecture field.

▼ Beijing Xiaotangshan Hospital



▲ New Outpatient Building of Peking Union Medical College Hospital



▲ Peking University First Hospital

▼ The Affiliated Suzhou Science and Technology Town Hospital, Jiangsu Province



▲ Wuhan Social Welfare Institute, Hubei Province

Healthcare

- New Outpatient Building of Peking Union Medical College Hospital
- Peking University First Hospital
- Beijing Aiyuhua Hospital for Women and Children
- Tongzhou District of Beijing Anzhen Hospital
- Huilongguan District of Beijing Jishuitan Hospital
- The general Hospital of PLA(301) Hainan Branch
- Sanya People's Hospital, Hainan Province
- The First People's Hospital of Fuoshan, Guangdong Province
- Shenzhen Xinhua Hospital, Guangdong Province
- Shenzhen Social Welfare Comprehensive Assistance Service Center, Guangdong Province
- Ganzhou Hospital of Guangdong Provincial People's Hospital (Shahe Campus)
- Rainbow Bay Welfare Center, Hongkou District, Shanghai
- The Affiliated Suzhou Science and Technology Town Hospital, Jiangsu Province
- Wuhan Social Welfare Institute, Hubei
- Outpatient-Inpatient Complex Building of Wuchang Hospital East Zone in Wuhan City, Hubei Province
- Longquan District of Hebei Provincial People's Hospital
- Lanzhou Maternal and Child Health Care Hospital, Gansu Province
- Elderly Rehabilitation Maintenance Area of Gansu Provincial Hospital New Zone Branch
- New District of The PLA Naval Anqing Hospital, Anhui Province
- The Second Children's Hospital of Henan (Luoyang Children's Hospital)
- Qingdao Wanda Yingci IHG International Hospital, Shandong Province
- Health Industry College and First Hospital of Shandong Qilu Medical University
- Jirun Jingyue Hospital in Changchun City, Jilin Province
- Yunnan Northeast Regional Medical Center
- Sichuan Deyang Tianfu Jingcheng General Hospital



▲ The general Hospital of PLA(301) Hainan Branch



▲ The First People's Hospital of Fuoshan, Guangdong Province

▼ Beijing Aiyuhua Hospital for Women and Children



Design consulting and
Project contracting

Design consulting



▲ Dai Show Theater in Xishuangbanna, Yunnan Province ▼ Mei Lanfang Grand Theater



▲ "Reminiscence of Shaoshan Chong" performance venue, Hunan Province

Cultural Tourism Business

- Mei Lanfang Grand Theater, Beijing
- Long March Digital S&T Art Museum, Guizhou Province
- Dai Show Theater in Xishuangbanna, Yunnan Province
- "Reminiscence of Shaoshan Chong" performance venue, Hunan Province
- Beijing Hotel Phase II
- Beijing Fortune Center
- Link Plaza
- China Europe R&D Center of Beijing China Europe International Business School
- Fengtai Softball Field of Beijing Olympic Games, Beijing
- The Twin Towers in Haikou, Hainan Province
- DoubleTree Resort by Hilton Sanya Haitang Bay
- Fujian Shimao 108 Building
- Lebanese National Conservatory of Music
- Laos International Convention Center
- Pakistan-China Friendship Center
- Cambodia National Stadium
- Chinese Embassy in the United States



- Integrated urban planning, urban design, architectural creation, architectural technology, environmental landscaping and interior design.
- IPPR has leading advantages in the industry of civil architecture that demands advanced comprehensive technologies, such as in the fields of the scientific research buildings, information centers, super high-rise buildings, and performing arts buildings.



▲ Beijing Hotel Phase II
▼ Link Plaza



▲ Beijing Fortune Center
▼ DoubleTree Resort by Hilton Sanya Haitang Bay

▼ China Europe R&D Center of Beijing China Europe International Business School



Design consulting and Project contracting

Design consulting



- Undertaken a number of major national science and technology infrastructure projects such as FAST, the Deep Sea Research Institute of the Chinese Academy of Sciences, and the large-scale earthquake engineering simulation research facility of Tianjin University. Among the 36 major scientific projects implemented between China's 11th Five-Year Plan and the 14th Five-Year Plan period, IPPR has undertaken preliminary consultation for 25 projects.

- Owning a high-level team specialized in designing scientific research and experimental buildings, IPPR has undertaken the design of plenty national biosafety P4 laboratories.

- IPPR takes the lead in professionalizing the design of computer server data center in China, and undertakes the design work of a large number of computer server data centers such as the Bank of China Information Center, the National Supercomputing Center in Shenzhen.

▲ Whole process consulting services for the The Five-hundred-meter Aperture Spherical radio Telescope (FAST) project under the National Astronomical Observatory of Chinese Academy of Sciences. Formulate the Hoisting Plan of the Reflecting Surface Unit. Design and provide technical services to the complete set of hoisting equipment.

▼ Large-scale Earthquake Engineering Simulation Research Facility of Tianjin University



▼ National Biosafety Level 4 Laboratory for Animal Disease Prevention and Control (Harbin Veterinary Research Institute)



▲ Comprehensive Research Building of China Academy of Inspection and Quarantine

▼ Business Building and High-performance Computer Room of Asia Climate Change Monitoring and Prediction Center of China Meteorological Administration

Industry and Science

- The 500-meter Spherical Radio Telescope (FAST) of the National Astronomical Observatory of CAS — Consulting for the Whole Process, Formulating the Hoisting Plan of the Reflecting Surface Unit, Designing a Complete set of Hoisting Equipment and Technical Services
- National Supercomputing Center in Shenzhen
- Business Building and High-performance Computer Room of Asia Climate Change Monitoring and Prediction Center of China Meteorological Administration
- Large-scale Earthquake Engineering Simulation Research Facility of Tianjin University
- Information Center of Bank of China
- Zhongguancun Information Center
- Light Element Quantum Material Cross Platform Project of Peking University
- National Biosafety Level 4 Laboratory for Animal Disease Prevention and Control (Harbin Veterinary Research Institute)
- Comprehensive Research Building of China Chinese Academy of Inspection and Quarantine

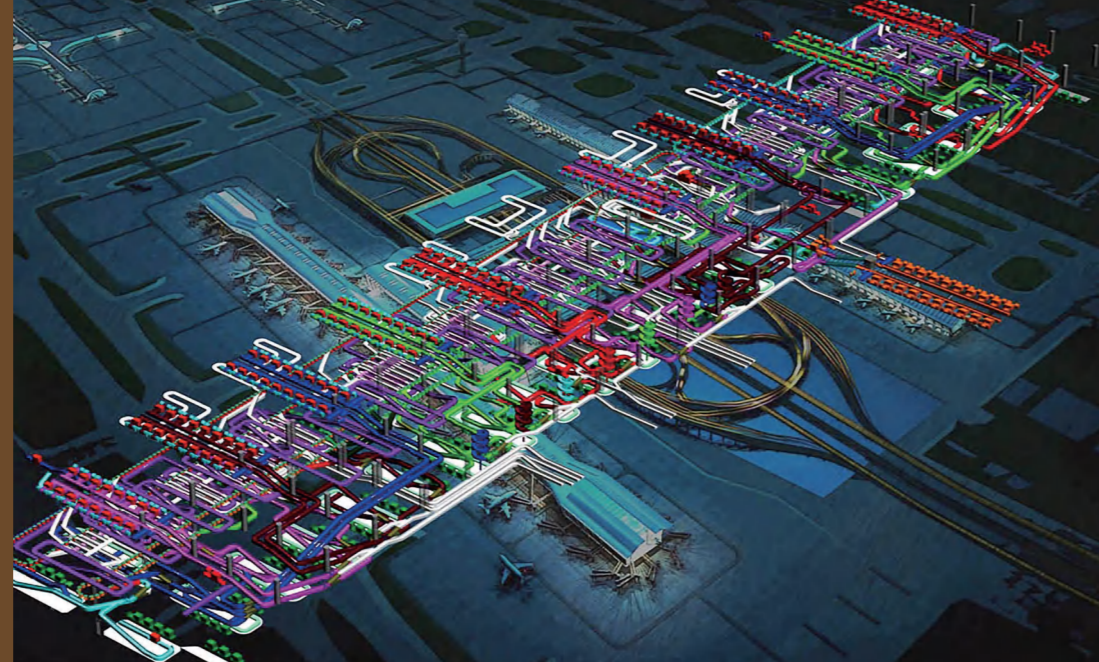
National Supercomputing Center in Shenzhen ▶



Design consulting and Project contracting

Design consulting

- Leader in Chinese modern logistics such as airport baggage systems, air cargo and express mail, airline food warehousing and distribution.
- In regard to the aviation logistics business, IPPR has provided services to and worked with all of the top 20 civil airports in China in terms of passenger handling capacity, covering all business stages and all provinces in China.



▲ Baggage System of T2 Terminal of Shanghai Pudong International Airport



▲ Gas-Steam Combined Cycle Cogeneration Project of Shandong Qingdao Gaoxin Thermal Power Co., Ltd.

- Provide services throughout the entire process of engineering construction in business areas such as central heating and cooling, heat and power cogeneration, distributed energy, renewable energy, residual-heat utilization, energy saving, sewage treatment, and comprehensive utilization of resources.
- IPPR has a number of core technical expertise, such as comprehensive utilization of regional energy, industrial boiler exhaust gas denitration technology, residual-heat recovery and utilization technology, and gas-fired CCHP technology.
- Lead/participate in the compilation of more than 30 energy-related standard specifications and standard atlases and reference books.

Modern Logistics

Beijing Daxing International Airport

Cargo Area of the Base Project of China Eastern Airlines
 Cargo Area of the Base Project of China Southern Airline
 Aviation Food Area of the Base Project of China Southern Airlines
 Airport Cargo Area, Baggage Handling System

Shanghai Pudong International Airport

Public Cargo Station in West Cargo Area of Airport Expansion Project
 Baggage System of T2 Terminal

Shanghai Hongqiao International Airport

Baggage System of T2 Terminal

Cargo Terminal of China Southern Airlines, Guangzhou Baiyun International Airport

Xinhua United Logistics Center

T3B Terminal of Chongqing Jiangbei International Airport

Heze Food Intelligent Cold Chain Logistics Distribution and Central Intelligent Kitchen

Haikou Comprehensive Bonded Zone Intelligent Processing Manufacturing Center



▲ Project of the Clearance Depot of Tianjin Airport (Phase I)

▼ Beijing Daxing International Airport China Eastern Airlines Freight Station



▲ 40MWp Photovoltaic Grid-connected Power Generation Project in Haiyang, Shandong

▼ Fengcun Shimenyang Central Heating Projects in Mentougou, Beijing

Energy

- Gas-Steam Combined Cycle Cogeneration Project of Shandong Qingdao Gaoxin Thermal Power Co., Ltd.
- 40MWp Photovoltaic Grid-connected Power Generation Project in Haiyang, Shandong Province
- Fengcun Shimenyang Central Heating Projects in Mentougou, Beijing
- Energy Project of Beijing Daxing International Airport
- Supporting infrastructure of Chengdu Science and Technology Innovation Base of China Academy of Engineering Physics
- Energy Center of New Terminal District at Shenzhen Baoan International Airport, Guangdong Province
- Household Waste Incineration Power Generation Project in Zhangjiagang, Jiangsu Province
- Upgrading and Reconstruction of Beijing Datun Waste Transfer Station
- Garbage Classification and Diversion in Chancheng District, Foshan, Guangdong Province



Design consulting and
Project contracting

Trade and Service



**Agricultural
Machinery**



**Livestock
Products**

CAMCE's international trade business platform includes China National Construction And Agricultural Machinery Import And Export Corporation (CAMC) and CAMCE Resources Trade Co., Ltd. (CAMCE-RC). CAMCE's international trade business platform includes China National Construction And Export Corporation (CAMC) and CAMCE Resources Trade Co., Ltd. (CAMCE-RC), which focuses on the fields of engineering machinery, agricultural machinery, farm and livestock produce, light industrial equipment, building materials, new energy, environmental protection and other fields. It provides customers with comprehensive services such as import and export, supply of complete sets of equipment, etc., and with full chain professional services for Chinese enterprises going global.



**Engineering
Machinery**



**Medical
Equipment**



Cableway



Farm Produce



▲ Shipment of Complete Nickel Smelting Equipment in Indonesia

▼ Hardwood Imports in South America

▼ Frozen Beef Trade in Uruguay



Design consulting and Project contracting

Trade and Service

CAMCE LOGISTICS CO., LTD. (referred to as "CAMCEL") has been engaging in door to door logistic services for international engineering contractors, traders and large manufacturing enterprises. Over the past two decades, CAMCEL has accomplished over 100 large and medium-sized engineering logistic projects in more than 50 countries and regions, involving the fields of energy, transportation, petrochemical, agriculture, light industry, housing construction, municipal works, mechanical engineering and related industries, through which CAMCEL has created a global green channel for the "Going Out" Chinese enterprises.

The Business Scope includes:

- Ocean freight
- Rail & land transportation
- Block train to EU & CIS
- Air freight & chartering
- Heavy & oversize cargo transportation
- Bulk cargo transportation
- Engineering logistics solutions
- Whole logistic chain: "factory to job site"
- Road survey and research
- Planning for packaging and warehousing
- Solutions for customs clearance
- Documentation solutions for international engineering projects



▲ Multimodal transportation for Vigia 2x600MW Power station project in Venezuela



▲ Railway transportation for projects in Uzbekistan

▼ Combined transportations for projects in Turkey



▲ Detachable Cableway on Mount Meihua, Longyan, Fujian Province

- Cableway of Silk Road International Ski Resort, Urumqi, Xinjiang
- Cableway of Koktokay International Ski Resort on Mount Altai, Xinjiang
- Cableway of Jikepulin Ski Resort, Altai, Xinjiang
- Detachable Cableway in Wanggangping Scenic Area, Shimian, Sichuan Province
- Detachable Cableway on Mount Wawu, Sichuan Province
- Detachable Cableway on Mount Luoji, Sichuan Province
- Detachable Cableway on Mount Emei, Sichuan Province
- Detachable Cableway of the Tiger Zoo, Longyan, Fujian Province
- Cableway on Mount Shiniu, Dehua, Fujian Province
- Detachable Cableway on Meifeng Island, Qiandaohu Lake, Zhejiang Province
- Nantian Cableway in Xianju Scenic Area, Zhejiang Province
- Detachable Cableway on the ZiJin Mountain, Nanjing, Jiangsu Province
- Cableway in Huangling Scenic Area, Wuyuan, Jiangxi Province
- Cableway in Beidahu Ski Resort, Jilin Province
- Detachable Ski Cableway of Four Seasons Town, Chongli, Hebei Province
- Detachable Cableway of Shandong Qingdao World Horticultural Exposition
- Detachable Cableway on Mount Tianzhu, Shaanxi Province
- Detachable Cableway at Tiger Beach, Dalian, Liaoning Province

▼ To-and-fro Cableway of Shenxianju Scenic Spot North Line, Zhejiang Province

▼ E1 Ropeway at Jikeprin Ski Resort in Altay, Xinjiang Autonomous Region (the longest ski ropeway with the largest vertical rise in Asia)



Development and Application of Advanced Engineering Technical Equipment

R & D and Manufacturing of Key Equipment

Passenger Cableways - We have a proven track record of delivering to China's most famous mountains and rivers

Beijing Materials Handling Research Institute Co., Ltd. (BMHRI), a subsidiary of CAMCE, has the Class A engineering design certificate for cableway in China. It has designed and built over 500 cableways and steel-rope hauling projects in China, accounting for nearly half of China's passenger cableways, being the long-lasting No.1 market share owner in China. BMHRI also provides the whole-process technical consultation service for over 50 imported cableway projects, ranked 3rd among its peers in the world.

BMHRI represents the highest level of overall development in China's cableway and cable car industry, and is in charge of drafting many current national standards and industry standards for passenger cableway.

Automated Logistics Warehousing Equipment System

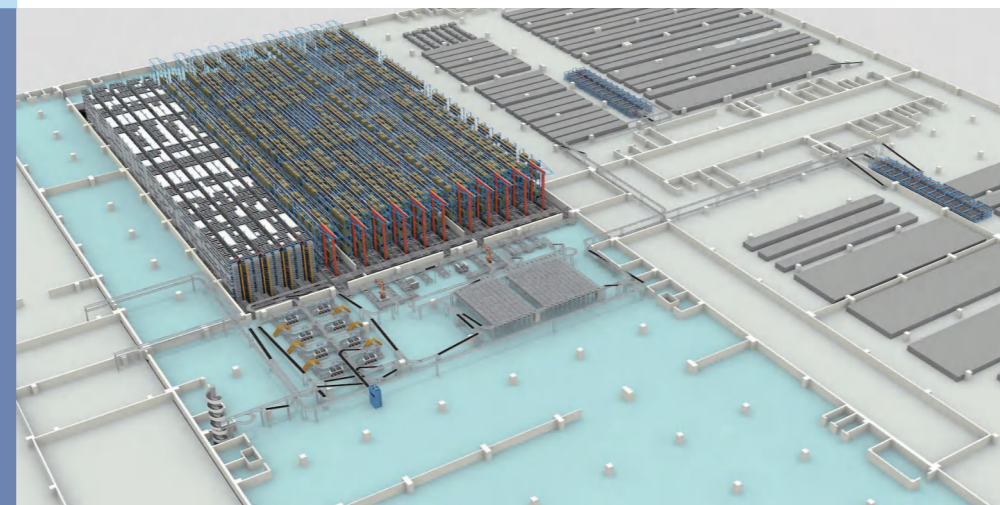
Beijing Materials Handling Research Institute Co., Ltd. (BMHRI), a subsidiary of CAMCE, has successfully implemented over seven hundred sets of automated logistics and warehousing equipment systems for various domestic and overseas industries; over one hundred sets of logistics and warehousing equipment systems for automated logistics distribution centers (involving pharmaceuticals, shoes and clothing, textile, household, intelligent manufacturing, materials, e-commerce, aviation and other industries); nearly one hundred sets of automated conveying and palletizing equipment systems for production line (involving pharmaceuticals, intelligent manufacturing, book printing, automobile, household, Fast-Moving Consumer Goods (FMCG) and other industries). Having a top market share in China, BMHRI is the leader in domestic logistics and warehousing industry.

BMHRI keeps pace with the development of focus technologies in the industry, puts more effort on the development of digital warehousing platform, and determines the digital twin technology roadmap. While consolidating the leading position in the pharmaceutical industry, it constantly expands the household market, and achieves new breakthroughs in the chemical industry.



- ▲ Laneway Stacker with Rail and Pallet Conveying System
- ▼ Integration Project of Intelligent Manufacturing Logistics Warehousing System

- Finished Product AS/RS of Wine Making Intelligent Technology Renovation Project in Gujing Distillery/General Contract Project of Packing Materials Intensive Warehouse Equipment
- AS/RS Project in Huanggang Base of KUKA (Huanggang) Co., Ltd.
- AS/RS Project of Yihai Jiali (Wuhan) Grain and Oil Industry Co., Ltd.
- Sinopharm Automated Logistics and Distribution Center Project (17 projects implemented in total)
- AS/RS Project of Sew Motors (Suzhou) Co., Ltd., Jiangsu Province (4 projects implemented in total)
- Finished Product Automatic Palletizing and AS/RS Project of Jiangsu Yanghe Distillery (5 projects implemented in total)
- Jiangsu Yangzhiang Hailang Pharmaceutical AS/RS Project
- AS/RS Project of Zhejiang Ningbo Bull Electric Co., Ltd.
- Intelligent Logistics System Project of Zhejiang Liangxin Electric (Haiyan) Co., Ltd.
- Automated Logistics and Distribution Center of Red Dragonfly Group, Zhejiang Province
- Intelligent Logistics System of Intelligent Manufacturing Industrial Park in the Hebian Town by Sichuan Changhong Multimedia Company
- Automated High-bay Warehouse Project of Sichuan Qianhe Condiment and Food Co., Ltd.
- Automated High-bay Warehouse of SAIC International Distribution Center
- Automated High-bay Warehouse Project of IKEA, Shanghai
- Automated High-bay Warehouse of JD.com Asia No.1 Logistics Park in Chengdu and Hangzhou
- Logistics System Integration for Beijing-Tianjin-Hebei Intelligent Logistics Park of Tianjing Easy Home
- International Logistics AS/RS Project of FAW-Volkswagen, Changchun, Heilongjiang Province
- AS/RS Project of Hebei People's Medical Publishing House
- Integration Project of -23 °C Automatic Cold Storage System of Aice, Indonesia



▼ Automatic Robot Palletizer and Depalletizer System



Hoisting Machinery

Effectively combining traditional crane and modern logistics technology, BMHRI has developed the market of intelligent crane system in such fields as intelligent port and intelligent manufacture, been committed to R&D of new environmental protection material conveying products, deeply expanded the markets of cement production, paper mills, garbage disposal, straw power generation, strengthened crossover marketing, and built emerging markets.

We have established a system of technology as well as standards for China's hoisting and conveying machinery, made a series of key technological breakthroughs, completed product development and research, and provided complete-equipment engineering.

We have undertaken hundreds of national scientific research projects and complete-equipment engineering projects, taking the lead in the development and design of over 100 products from China's hoisting and conveying machinery standard series, drafted more than 400 national and industry standards such as Design Rules for Cranes. In addition, we have successfully developed nearly 100 kinds of cranes and their designated spare parts, for the first time in China, with our own independent intellectual property rights.

Up to now, we have undertaken more than 700 projects (including 13 overseas projects), in which over 1600 automatic cranes are involved.

▼ Automated Crane Remote Operation and Monitoring System



▼ Multi-function Grab Crane for Collaborative Engineering

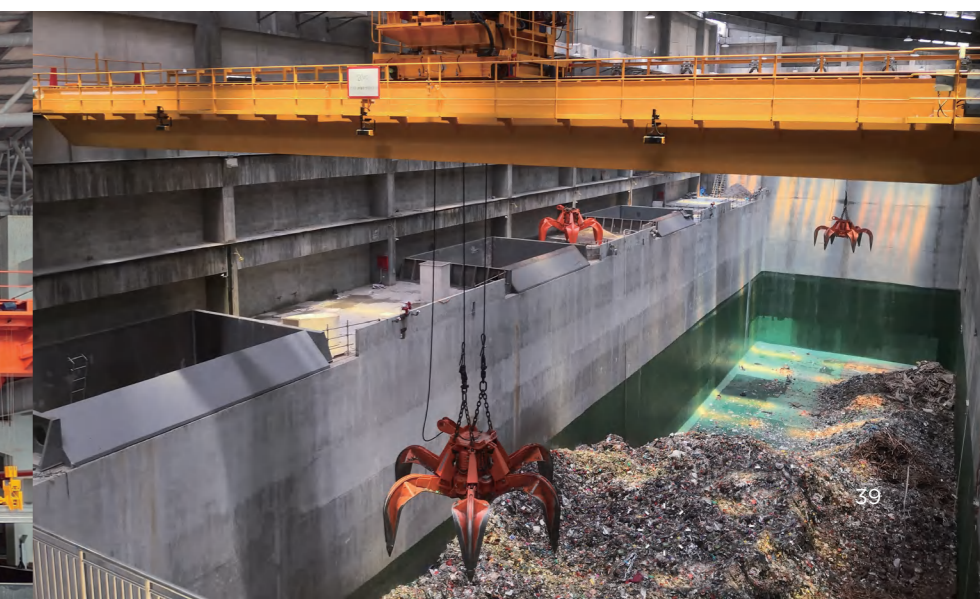


Development and Application of Advanced Engineering Technical Equipment

R & D and Manufacturing of Key Equipment

- Waste Power Generation Project of Keppel Seghers Hong Kong - Automated Ash Crane
- Straw Power Generation Project of Jiangsu Guoxin Rudong Biomass Power Generation Co. Ltd. - Automated Straw Bale Crane
- Straw Power Generation Project of Zhongdian Xingtang Biomass Energy Thermoelectric Co. Ltd. - Automated Grab Crane
- Joint Storage Facility of Kunming Chongde Cement Co. Ltd., Yunnan - Automated Grab Crane
- Waste Power Generation Project in Hohhot by Jinjiang Group - Automated Crane
- Cement Kiln Coordinated Waste Disposal Project in Tongling City of Hailuo Group - Automated Crane
- Hazardous Waste Treatment Project by Wuhu Haichuang Environmental Protection Technology Co. Ltd - Automated Controlled Crane
- Project of Sanhe Kangheng Renewable Energy Co., Ltd. - Intelligent Grab Bridge Crane
- Waste Power Generation Project of Convest Environmental Protection Group - Automatic Controlled Crane
- Waste Power Generation Project by Keppel Seghers Singapore - Automatic Controlled Crane
- Waste Power Generation Project in Phuket Island, Thailand - Automatic Controlled Crane

▼ Automatic Garbage Crab Crane (with domestic market share over 50%)



Development and Application of Advanced Engineering Technical Equipment

R & D and Manufacturing of Key Equipment



▲ Long-distance Conveying System Project of Jidong Cement Group in Pingquan



▲ Iron Ore Terminal Loading Building System at Zhanjiang Port, Guangdong Province



▼ Refined Sugar Silo System in Ethiopia

Bulk Material Transportation

Integrated R&D, Design and Manufacturing, Installation and Construction
 Loading and Conveying System for the Port and Mine Yard
 Integrated Raw Material Yard System
 Round Tube Belt Conveyor System
 Bulk Material Filling and Weighing
 Long-distance Belt Conveyor System
 Train Loading System

- Long-distance Belt Conveyor System of Qiyalvdian Company, Xinjiang
- Belt Renovation Project of Yihua Group, Xinjiang
- Pipe Belt Conveyor System of Benxi Iron and Steel Group Company, Liaoning Province
- Iron Ore Terminal Loading System in Zhanjiang Port, Guangdong Province
- Transit Grain Depot Project, Zhoushan, Zhejiang Province
- Ash Conveying System for Baolong Group, Puyang, Henan Province
- Fertilizer Belt Conveyor System of Boyuan Group, Xing'an, Inner Mongolia
- Long-distance Conveying System Project of Jidong Cement Group in Pingquan
- Refined Sugar Silo System in Ethiopia
- Belt Conveyor System of ESDC
- HDRI Project of The Lion Group, Malaysia
- Pentacyclic Phosphoric Acid Project in Indonesia
- Belt conveyor for Hebei Nitrogen Fertilizer Chemical Plant in Vietnam

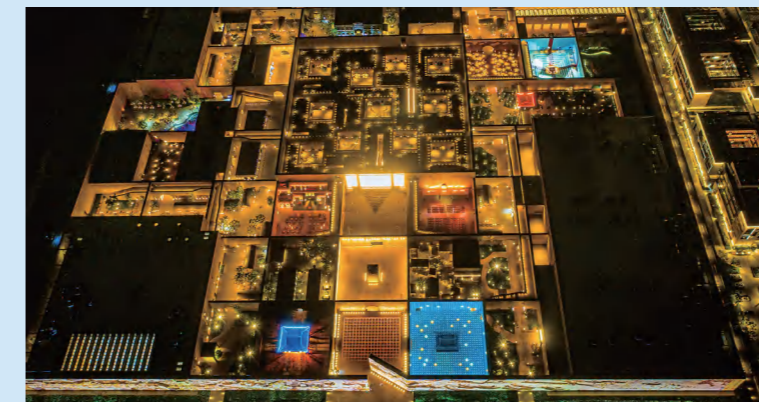
Application of Architectural Acoustics Technology



Development and Application of Advanced Engineering Technical Equipment

Development and Application of Advanced Engineering Technology

◀ China National Opera House



▲ Only Henan Drama Fantasy City



▲ Long March Digital S&T Art Museum, Guizhou Province

BIM Realizes Digital Design



▲ Belarus National Stadium



▲ Hefei Binhu International Science Exchange Center

Structural design of complex large-span space and super high-rise building



▲ China-aided Cambodia National Stadium



▲ Ningbo New World



▲ Haikou Tower

Development and Application of Advanced Engineering Technical Equipment

Development and Application of Advanced Engineering Technology

Key Technologies of Long-distance and Long-span Detachable Passenger Cableway



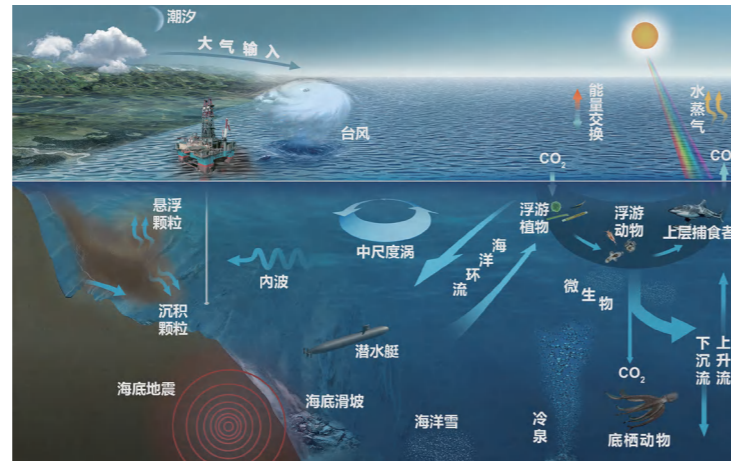
▲ Cableway on Mount Shiniu, Dehua, Quanzhou, Fujian Province

National information data processing center



▲ Bank of China Information Center

Big Science and Smart City Engineering Consultation



▲ Consultation of South China Sea Seabed Observation Subnet Project

Automatic and Intelligent Lifting System for Multi-material Comprehensive Treatment in the Same Plant



▲ Crane of Kunming Chongde Cement Co., Ltd.

Flexible and Precise Long-span Lifting Technology and Application



▲ Lifting of Reflecting Surface System for the Five-hundred-meter Aperture Spherical Radio Telescope (FAST)



▲ High-performance Strategic Computing Capacity Building Project



▲ Fire Big Data Integrated Application Platform of Foshan Fire Rescue Command Center

Digital Simulation of Pharmaceutical Warehousing and Logistics System



▲ AS/RS of Beijing Tongrentang

Round Tube Belt Conveyor Technology for Bidirectional Material Conveying



▲ Pipe Belt Conveyor System of Benxi Iron and Steel Group Company, Liaoning Province



▲ Sewage Treatment Plant, BOT project in Longquanyi District, Chengdu, Sichuan Province
 ▼ Anren Sewage Treatment Plant, BOT project in Dayi County, Chengdu, Sichuan Province

Special Equipment Inspection and Testing Technology



▲ Type Test of 1600t Shipbuilding Gantry Crane



▲ 2400t Portal Slewing Crane (Awarded with Guinness World Records Certificate)

Engineering Investment and Operation

China CAMCE Environmental Technology Co., Ltd., a subsidiary of CAMCE, has professional capabilities of integrating design, R&D, equipment manufacturing, investment, construction, and operation in the field of environment protection, and focus on expanding projects in the field of municipal water supply and drainage, industrial wastewater treatment, solid waste disposal and soil remediation. We are committing to becoming a professional, advanced and comprehensive service provider for the entire industry chain in the field of environmental protection.



▼ East City Sewage Treatment Plant, Operation project in Fuping County, Baoding, Hebei Province

▼ Sewage Treatment Plant, BOT project in Pizhou, Jiangsu Province





▲ East City (Paoche) Sewage Treatment Plant, TOT project in Pizhou, Jiangsu Province



▲ Yangmei Taihua industrial wastewater treatment system in Taiyuan, Shan'xi Province



China-Belarus Industrial Park

Located in Minsk Oblast, Belarus, the total area of China-Belarus Industrial Park is 117.61 square kilometers. It has been so far China's only overseas industrial park that is based on the highest cooperative level and covers the largest development area, attracting global high-end manufacturing and R&D companies to settle and develop. The office building of China-Belarus Industrial Park won the Luban Award for overseas projects.

The park is committed to building an "international industrial park and an ecological industrial city", developing in the direction of "green, smart, ecological, and digital", and carrying out overall development in an integrated model of investment, construction, and operation. The first phase of 8.5 square kilometers of infrastructure construction has been completed. Roads, power-supply, water supply, drainage, telecommunications, fuel-supply and heating facilities as well as flattened land are available. It provides resident companies with a full range of supporting services such as construction, property management, energy supply, consulting, and logistics. The park focuses on the development of electronics and telecommunications, pharmaceuticals, medical products and services, inspection and diagnosis, fine chemicals, biotechnology, machinery manufacturing, new materials, integrated logistics, e-commerce, big data storage and processing, social culture and research and development industries. At present, more than 100 resident companies from 15 countries have settled in the park. The total investment in the agreement is over 1.3 billion U.S. dollars.

Municipal wastewater:

- Sewage Treatment Plant, BOT project in Longquanyi District, Chengdu, Sichuan Province
- Anren Sewage Treatment Plant, BOT project in Dayi County, Chengdu, Sichuan Province
- Sewage Treatment Plant, BOT project in Pizhou, Jiangsu Province
- East City Sewage Treatment Plant, Operation project in Fuping County, Baoding, Hebei Province

Industrial wastewater:

- East City (Paoche) Sewage Treatment Plant, TOT project in Pizhou, Jiangsu Province
- Yangmei Taihua industrial wastewater treatment system in Taiyuan, Shan'xi Province

Treatment of Solid Wastes:

- Central City Kitchen Waste Treatment Plant, PPP Project in Dalian, Liaoning Province
- Kitchen Waste Treatment Plant, BOT Project in Xichang, Sichuan Province



▼ Kitchen Waste Treatment Plant, BOT Project in Xichang, Sichuan Province

▲ Central City Kitchen Waste Treatment Plant, PPP Project in Dalian, Liaoning Province



SINOMACH Torch Park

Located in China-Belarus Industrial Park, SINOMACH Torch Park is jointly invested and established by China National Machinery Industry Corporation Ltd. (SINOMACH) and China CAMC Engineering Co., Ltd. (CAMCE). It cooperates with Torch Center of Ministry of Science and Technology and Zhongguancun Science Park to actively implement the Belt and Road Science and Technology Innovation Action Plan and carry out R&D and innovation projects in the fields such as artificial intelligence, big data, industrial Internet, new energy, healthcare and traditional Chinese medicine. It provides innovative companies with supporting services including R&D shared office, standardized laboratories, new product docking, exhibitions, scientific and technological talent exchange.



Financial Partners



Technical Strength

CAMCE has compiled and revised hundreds of domestic and international standards and industrial standards, and has received more than 1,000 national and provincial awards in engineering-related fields.

Professional qualification

CAMCE and its subsidiaries have the

Design and Consulting:

- Grade A Comprehensive Qualification of Engineering Design
- Grade A Engineering Consulting Credit
- Grade A for Engineering Cost Consultation
- Grade A for Urban and Rural Planning Preparation
- Comprehensive qualification of project supervision

Engineering:

- First-class General Contractor for Construction Projects
- First-class Contractor of Professions including Electronics and Intelligence, Fire-fighting Facilities Engineering, Building Mechanical and Electrical Installation Engineering, and Building Decoration

Standards and Testing:

- Approval Certificate awarded by special equipment inspection and testing institution (lifting machinery type test institution), (passenger Cableway comprehensive inspection agency class A)
- Qualification Certificate awarded by production safety inspection and testing institution
- Certificate Awarded by Logistics Military Product Testing and Inspection Agency
- Approval Certificate awarded by type test agency
- Laboratory Accreditation Certificate awarded by China National Accreditation Service for Conformity Assessment

Equipment R&D and Manufacturing:

- Municipal Services (manned Cableway) Class A
- Qualification Certificate Awarded by Equipment Supervision Unit
- Production License of Special Equipment (Passenger Cableway Manufacturing)----BMHRI (National Bureau)
- Production License of Special Equipment (Hoisting Machinery Manufacturing)----BMHRI (National Bureau)
- Manufacture License of Special Equipment (Passenger Cableway)----BMHRI Equipment Manufacturing (National Bureau)
- Production and Manufacture License (Hoisting Machinery) ---- BMHRI Equipment Manufacturing (National Bureau)
- Production and Manufacture License (Hoisting Machinery) ---- BMHRI Equipment Manufacturing (Beijing Bureau)
- Installation, Alteration, Repair & Maintenance License(Hoisting Machinery) ---- BMHRI Equipment Manufacturing (Beijing Bureau)



Expert Team

1 Member of the Chinese Academy of Engineering

2 National Engineering Survey and Design Masters

19 Experts with Special Government Allowances from the State Council

Over 950 registered engineers in various fields

Over 3,500 designers"



Xu Jian

Academician of Chinese Academy of Engineering
(Former chairman of CAMCE)



Huang Xiqu

National Engineering Survey and Design Master
Winner of Liang Sicheng Award
Designer of Beijing Xiaotangshan Hospital
National advanced individual in combating the Covid-19 epidemic
National outstanding member of Communist Party



Lu Daming

Vice President and Secretary General of China Mechanical Engineering Society
(original president of BMHRI)



Huang Yuefeng

Vice President of China Ropeway Association
Chief Expert of China National Machinery Industry Corporation



Zhang Qiang

President of ISO/TC96 Crane Technical Committee of International Organization for Standardization
Vice President of China Association of Plant Engineering Consultants



Huang Xiaojia

National Engineering Survey and Design Master
Outstanding Contribution Expert of SINOMACH



Ding Jian

Supervisor of the Board of Supervisors of the Architectural Society of China
Chairman of Science and Technology Innovation Committee of China Engineering & Consulting Association



Tang Chao

Vice President of China Heavy Machinery Industry Association
Vice President of China Construction Machinery Industry Association
Vice President of China Promotion Association for Special Equipment Safety and Energy-saving
President of Industrial Truck Branch of China Construction Machinery Industry Association
President of Logistics and Storage Machinery Branch of China Heavy Machinery Industry Association
Senior Vice President of Parking Equipment Working Committee of China Heavy Machinery Industry Association



Zhao Yongbo

Chairman of Industrial Architecture Branch of the Architectural Society of China



Zhang Tongyi

Vice President of Architectural Design Branch of China Engineering & Consulting Association
Vice Chairman of Structural Design Branch of China Engineering & Consulting Association



Liu Wusheng

Chief Expert of China National Machinery Industry Corporation



Detachable Cableway over Jinghua Bridge, Mount Wafu, Sichuan Province



Pakistan-China Friendship Center

Industry influence

Provincial and Ministerial Research Platforms

Beijing Enterprise Technology Center
 Beijing Science and Technology Research and Development Institution
 Postdoctoral Research Station
 Beijing Design Innovation Center
 Beijing Automatic Logistics Equipment Engineering Technology Research Center
 Mechanical Industry Material Handling Engineering Technology Research Center
 Key Laboratory of Lightweight Technology for Hoisting Machinery in Machinery Industry
 National Strategic Alliance for Technological Innovation of Hoisting Machinery Reduction

National Testing Centers

National Center for Quality Supervision and Inspection of Hoisting and Conveying Machinery
 National Center for Safety Supervision and Inspection of Passenger Overhead Cableway
 National Center for Inspection and Testing of Hoisting and Conveying Equipment for Mine Safety Production, Beijing Branch

Secretariat of National Technical Committee for Standardization

National Technical Committee on Lifting Appliance of Standardization Administration of China
 National Standardization Technical Committee for Continuous Handling Machinery
 National Logistics and Warehousing Equipment Standardization Technical Committee
 National Industrial Vehicle Standardization Technical Committee
 Bridge and Portal Crane Sub-Technical Committee of National Technical Committee on Lifting Appliance of Standardization Administration of China
 National Crane Machinery Standardization Technical Committee Parking Equipment Sub-Technical Committee
 Subcommittee 6 on Electrical system and Intelligitization of National Technical Committee 227 on Lifting Appliance of Standardization Administration of China

Chairmanship in the International Organization for Standardization

Chairman of ISO/TC96
 Chairman of ISO/TC96/SC4
 Chairman of ISO/TC110/SC5

Director General, Chairman and Secretary-General of the National Associations of the First and Second Level Societies

China Machinery Industry Engineering & Consulting Association (Secretary-General)
 Industrial Building Branch of Architectural Society of China (Director General, Secretary-General)
 Engineering Fire Protection Technology Branch of China Civil Engineering Society (Director General, Secretary-General)
 Science and Technology Innovation Committee of China Engineering & Consulting Association (Chairman, Secretary-General)
 EPC Branch of Beijing Engineering Survey and Design Industry Association (President, Secretary-General)
 Standard Internationalization Research Committee of China Association for Engineering Construction Standardization (Chairman, Secretary-General)
 Medical Building and Facilities Professional Committee of China Association for Engineering Construction Standardization (Chairman, Secretary-General)
 Technical Quality Working Committee of China Machinery Industry Engineering & Consulting Association (Chairman, Secretary-General)
 System Reform Working Committee of China Machinery Industry Engineering & Consulting Association (Chairman, Secretary-General)
 Laboratory Animal Equipment Engineering Committee of Chinese Association for Laboratory Animal Science (Chairman, Secretary-General)
 Thermal and Gas Professional Committee of Chinese Society of Power Engineering (Chairman, Secretary-General)
 Interior Design Branch of the Architectural Society of China (Secretary-General)
 Medical Building Branch of the Architectural Society of China (Secretary-General)
 Construction Vibration Professional Committee of China Association for Engineering Construction Standardization (Secretary-General)
 China Cableway Association (secretary-general)
 Logistics Engineering Institution, CMES (Chairman)
 Electrical Overhead Traveling Crane Committee, CHMIA (Director General and Secretary-General)
 Logistics Equipment Institution, CHMIA (Director General and Secretary-General)
 Industrial Truck Institution, CCMA (Chairman and Secretary-General)

Research and Service Platform

National SME Public Service Demonstration Platform

Industry Technical Journals

Magazine - Lifting the Transport Machinery

Standard Setting

CAMCE and its subsidiaries have compiled and revised more than 600 industrial standards for housing construction, municipal administration and machinery, among which more than 400 are national standards and more than 200 are industrial standards.

Engineering Construction Standard

International Standard: Requirements and recommendations for the construction of emergency medical facilities (IWA 38:2021)

National Standard:

Steel Structure Design Standard GB 50017-2017
 Building Vibration Load Code GB/T 51228-2a017
 Guidelines for Energy-saving Design and Evaluation of Industrial Boiler Systems GB/T 34912-2017
 Unit and Symbol for Urban Heating GB/T 34187-2017
 Engineering Vibration Terminology and Symbol Standard GB/T 51306-2018

Industry Standard:

Technical Specifications for Emergency Assessment and Repair of Buildings after Earthquake JGJ/T 415-2017
 Design Codes for Heating, Ventilation and Air Conditioning of Welding Workshops JGJ 353-2017
 Construction Standard for Maternal and Child Health Service Institutions 189-2017
 Construction Standard for Urban Heating Plant Project 112-2018
 Technical Standards for Integrated Prefabricated Interior Decoration of Medical Buildings T/CSUS 03-2019
 Design Standards for Research Buildings JGJG 91-2019

Group Standard:

P-BIM Software Function and Information Exchange Standard for Water Supply and Drainage Design T/CECS-CBIMU10-2017
 P-BIM Software Function and Information Exchange Standard for Concrete Structure Design T/CECS-CBIMU7-2017
 Data Center Refrigeration and Air Conditioning Design Standard T/CECS487-2017
 Design Standards for Emergency Medical Facilities of COVID-19 Epidemic T/CECS661-2020

Machinery Equipment Standard

International Standard: Cranes - Terminology - Part 4: Jib Cranes ISO 4306.4-2020

National Standard:

Mechanical Parking Systems - General Safety Requirement	GB 17907-2010
Safety Code for Launching Machine	GB 26469-2011
Safety Requirements for Passengers Funiculars	GB 19402-2012
Safety Code for Passengers Aerial Ropeways	GB 12352-2018
Technology Code for Passengers Surface Lifts	GB/T 19401-2003
Design Rules for Cranes	GB/T 3811-2008
Code for Examination and Discard of Ropes for Ropeway	GB/T 9075-2008
Energy Efficiency Test Methods for Electrical Hoists	GB/T 30028-2013
Belt Conveyors	GB/T 10595-2017
Lifting Appliances - Safety Monitoring System	GB/T 28264-2017
Specification of Guide Wheel Sorting Machine	GB/T 35485-2017
Specification of Spiral-conveyor for Logistics Warehousing Distribution Center	GB/T 35486-2017
Industrial Trucks - Safety Rules for the Application, Operation and Maintenance	GB/T 36507-2018
Basis for Calculation of Belt Conveyors	GB/T 36698-2018
Mechanical Parking System - Design Rules	GB/T 39980-2021
Technical Requirements of Manufacturing and Installation Consulting Service for Mechanical Parking System	GB/T 39055-2020
Technical Requirements of Manufacturing and Installation Consulting Service for Automated Storage and Retrieval System	GB/T 39060-2020
Operating Management of Passenger Ropeway	GB/T 41094-2021
Industrial Trucks - Safety Monitoring System	GB/T 38893-2020
Safety Devices against Over Loading for Lifting Appliances	GB/T 12602-2020
Safety Assessment Rules for Lifting Appliances - General Requirements	GB/T 41510-2022

Industry Standard:

Counterbalanced Fork-lift trucks - Testing Method for Whole Machines	JB/T 3300-2010
Automated Storage and Retrieval System - Design Rules	JB/T 9018-2011
Internal Combustion Counterbalanced Forklift Trucks - Limited Value of Energy Efficiency	JB/T 11764-2018
Internal Combustion Counterbalanced Forklift Trucks - Energy Efficiency Test Methods	JB/T 11988-2014
Brake Motors for Lifting Appliances - Limited Value of Energy Efficiency	JB/T 13357-2018
Driveless Industrial Trucks	JB/T 13696-2019
Explosion-proof Gantry Crane	JB/T 13988-2020
Storage Plastic Containers	JB/T 14036-2021

MISSION

**Creating Chinese
Engineering Value and Building
a Better Life for Mankind**

VISION

**Becoming a Brilliant
Engineering Leader with
International Competitiveness**

CORE VALUES

**Value-oriented
Innovation
Responsibility
Excellence**

Social Responsibility

CAMCE sticks to the mission of fulfilling social responsibility and repaying the society. CAMCE actively supports the development of public welfare both at home and abroad, and provides medical and health services for communities, as well as makes contribution in various areas such as targeted poverty alleviation, disaster relief, environmental protection and social welfare.



▲ Provided important technical reference information for design works of Wuhan Huoshenshan Hospital, as well as technical support and consulting services, winning the title of Excellent Team issued by Chinese government to state-run enterprises in the fight against COVID-19 epidemic.

国家卫生健康委员会(局)便函

感谢信

中国中元国际工程有限公司:

为贯彻落实党中央国务院决策部署,聚焦新冠肺炎疫情暴露的公共卫生特别是重大疫情防控救治能力短板,推进《公共卫生防控救治能力建设方案》实施,指导医院加强平战结合建设,我委组织开展了《综合医院“平疫结合”可转换病区建筑技术导则(试行)》(以下简称《技术导则》)编制工作。

你司集众智,凝共识,重专业,成立编制组,任劳任怨,以迎难而上的担当,夜以继日、连续奋战,仅用一个月即完成了编写工作,为《技术导则》编制做出了重要贡献,充分展现了你司科学严谨的态度和扎实细致的工作作风。目前,《技术导则》已由我委会同国家发展改革委联合公开发布,为疫情常态化形势下,加强医院建设提供了有力的技术支撑。

特向你司长期以来对我们工作的支持和所付出的努力表示衷心感谢!

国家卫生健康委员会
2020年9月18日



▲ Appreciation Letter from National Health Commission

▼ Panorama of the Villagers' Committee assisted by CAMCE, Yulin Village, Yudong Town, Chaotian District, Guangyuan City, Sichuan Province



▼ Donation of goods to the second orphanage in Belarus



▼ Providing construction funds for primary schools in Kenya



▲ Making a donation to the Lao government



▼ Organizing staff to participate in relief activities after the Ecuador earthquake



Domestic Branch

China IPPR International Engineering Co.,Ltd.

Phone: 010-68458355
Fax: 010-68732688
URL: www.ippr.com.cn
Address: No.5 North Xisanhuan Road.beijing

IPPR Engineering International Co.,Ltd.

Phone: 010- 68732977
Fax: 010- 68732977
Address: 2nd Floor, No. 32 (Integrated Scientific Research Business Building), Zizhuyuan Road, Haidian District, Beijing

IPPR (Xiamen) Engineering Design & Research Institute Co.,Ltd.

Phone: 0592- 5373666
Fax: 0592- 5373666
Address: 11th Floor, Building B, Haiyi Building, 668 Xiahe Road, Xiamen, Fujian

IPPR (Hainan) Engineering Design & Research Institute Co.,Ltd.

Phone: 0898-66225084
Fax: 0898-66225084
Address: 9th Floor, Central International Plaza, 77 Binhai Avenue, Haikou, Hainan

IPPR (Changchun) High-Tech Architecture Design Co.,Ltd

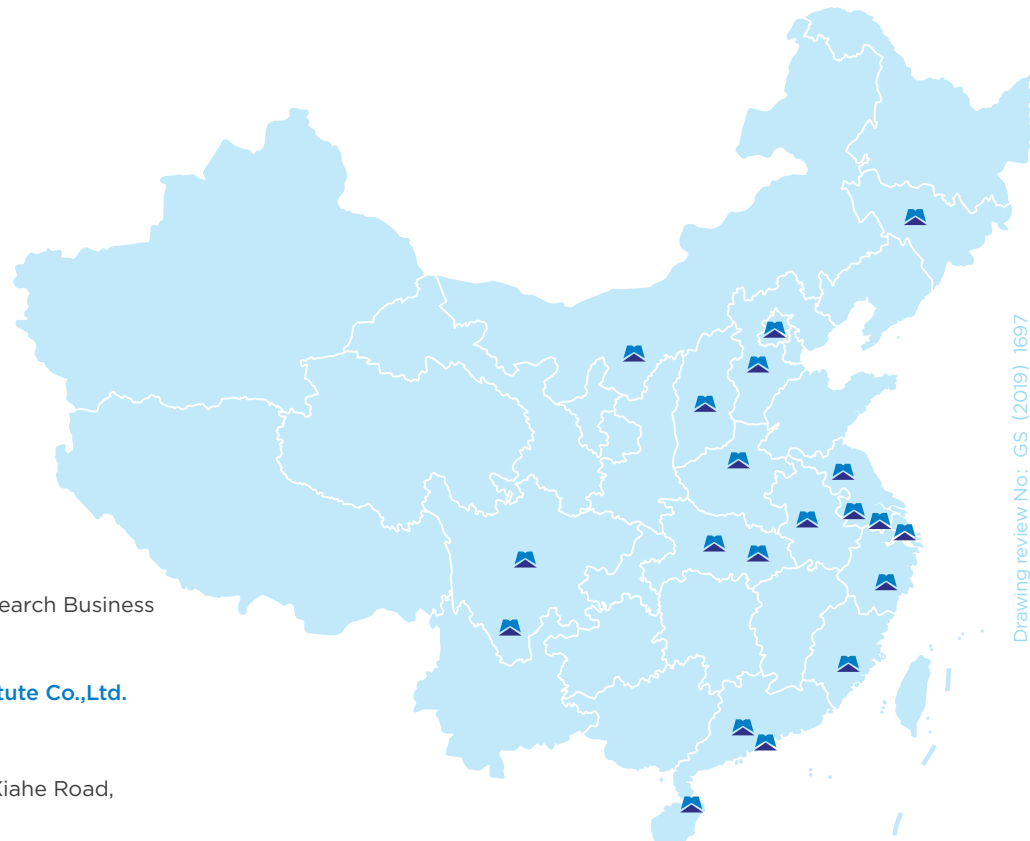
Phone: 0431-82531755
Fax: 0431-82531755
Address: No. 4166, Beiyuanda Street, BeiHu Technology Development Zone, Changchun, Jilin

IPPR (Shanghai) Engineering Design & Research Institute Co.,Ltd.

Phone: 021-31265577
Fax: 021-58703189
E-mail: info@ipprsh.net
Address: 6F, 7F01, Block B, China Gold Building, No.568 Bocheng Road, Pudong New Area, Shanghai

IPPR (Nanjing) City Plan & Architectural Design Institute Co.,Ltd.

Phone: 025-87712405
Fax: 025-87712405
Address: Address: 8th Floor, Jinji Plaza, 272 Shuiximen Street, Nanjing Jiangsu



Beijing SINOMACH IPPR Design Consultancy Co.,Ltd.

Phone: 010-68732517
Fax: 010- 68732517
Address: 5th Floor, No. 32 (Integrated Scientific Research Business Building), Zizhuyuan Road, Haidian District, Beijing

China IPPR International Engineering Co. Ltd. Guangdong Branch

Phone: 0755-82195992
Fax: 0755-82195992
Address: Unit 06-07, 17th Floor, Shenzhen City Investment Center, No. 1011 Binhe East Road, Luohu District, Shenzhen, Guangdong

China IPPR International Engineering Co. Ltd. Anhui Branch

Phone: 0551-65139905
Fax: 0551-65139905
Address: Room 1205, Building 5, Tianlong Plaza, No.588 Qianshan Road, Shushan District, Hefei, Anhui

China IPPR International Engineering Co. Ltd. Central China Branch

Phone: 027-81659887
Fax: 027-81659887
Address: Building B9, Guanggu Financial Port, Donghu New Technology Development Zone, Wuhan, Hubei Province

Beijing Materials Handling Research Institute co., Ltd.

Phone: 010-64031206
Fax: 010-64052584
URL: www.bmhri.com
E-mail: admin@bmhri.com
Address: No.52 Yong He Gong Street, Dongcheng District, Beijing

Beijing Materials Handling Equipment Manufacturing (Beijing) Co., Ltd.

Phone: 0312-4538363
Address: Yongle Economic Development, Tongzhou District, Beijing

Beijing Kezhengping Engineering Technology Testing Institute Co., Ltd.

Phone: 010-64033342 (National Hoisting and Conveying Machinery Quality Supervision and Inspection Center) / 010-64038394 (National Safety Supervision and Inspection Center for Overhead Passenger Cableway)
Address: 52 Yonghegong Dajie, Dongcheng District, Beijing, China

Henan Branch of Beijing Materials Handling Research Institute Co., Ltd.

Phone: 010-64031568 / 010-64033409
Address: Weizhuang Sub-district, Changyuan County, Henan Province

China CAMCE Enviromental Technology Co., Ltd.

Phone: 010-82582550
Fax: 010-82559038
E-mail: camcew@camce.com.cn
Address: Room 1208, NO.3, Danling Street, Haidian District, Beijing

Chengdu CAMCE Waterworks Co., Ltd.

Phone: 028-84827112
Address: Group 8, Ping'an Village, Longquanyi District, Chengdu, Sichuan Province

Baotou CAMCE Water Co. Ltd

Address: 8-A2121, Tianfu Business Square, No. 1 Jianhua Road, Jiuyuan District, Baotou city, Inner Mongolia

Pizhou CAMCE Waterworks Co., Ltd.

Phone: 0516-86263186
Fax: 0516-86263189
Address: Xi'an Road, Pizhou, Jiangsu Province

China CAMCE Enviromental Technology Co., Ltd.

Phone: 010-82582550
Fax: 010-82559038
E-mail: camcew@camce.com.cn
Address: Room 1208, Floor 11, No. 3 Danling Street, Haidian Distrct, Beijing

Xichang CAMCE Chengtuo Environment Co. Ltd.

Address: No. 1 Ningcheng Road, Xicheng Street, Xichang, Liangshan Yi Autonomous Prefecture, Sichuan Provinc

China Camce Environmental Technology(Dayi), Ltd

Phone: 028-88218094
Address: Room 321, Floor 3, Building B4, No. 888 Inner Mongolia Avenue, Dayi County, Chengdu, Sichuan Province

Fuping Branch of China CAMCE Enviromental Technology Co., Ltd.

Address: Fuping County Economic Development Zone, Baoding, Hebei Province -- Fudong New District, Shahe North Road, East City Sewage Treatment Plant of Fuping

CAMCE Huanwei (Dalian) Resource Recycling Technology Co., LTD

Address: Xiajiahe Village, Gezhenpu Street, Ganjingzi District, Dalian, Liaoning Province

CAMCE WOTEER Water Technology Co., Ltd.

Phone: 010-82582550
Fax: 010-82559038
URL: www.woteer.com.cn
E-mail: woteer@woteer.com.cn
Address: Room 1-57-1001, NO.3, Danling Street, Haidian District of Beijing, China

Changzhou Jiangnan Environmental Engineering Co., Ltd.

Phone: 0519-68856818
Fax: 0519-68856800
URL: www.jnee.net
E-mail: jnee@woteer.com.cn
Address: No.1 Xinfu Road, Zhonglou District, Changzhou, Jiangsu Province

Shanxi Woteer Taihua Water Treatment Co., LTD

Address: Taihua New Material Park, Qingxu County, Taiyuan City, Shanxi Province

CAMCE Logistics Co., Ltd

Phone: 010-82688276
Fax: 010-82688229
URL: www.camcel.com.cn
E-mail: trans@camce.com.cn
Address: SINOMACH Plaza, No.3 Danling Street, Haidian District, Beijing

China National Construction & Agricultural Machinery I/E Corp

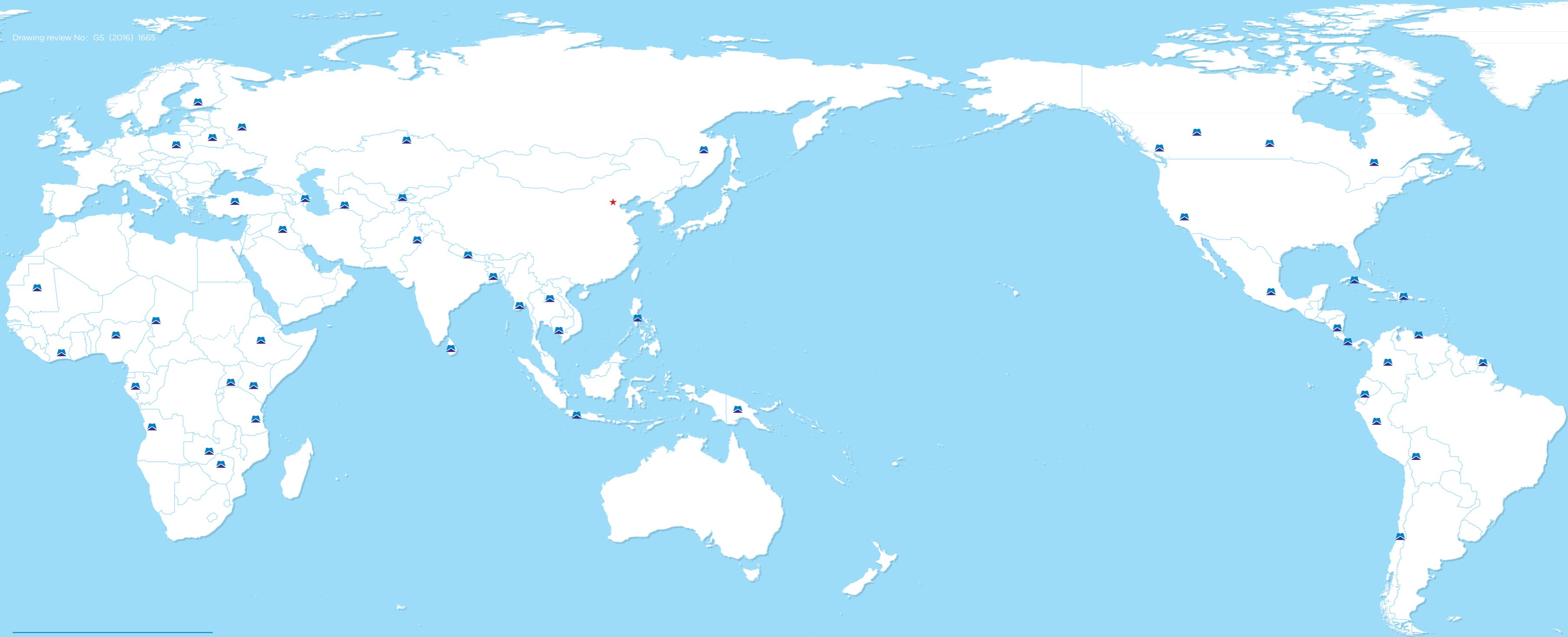
Phone: 010-82688899
Fax: 010-82688024
URL: www.camc.com.cn
E-mail: camc@camce.com.cn
Address: No.3 Danling Street, Haidian District, Beijing

CAMCE Resources Co., Ltd.

Phone: 025-86668826
Fax: 025-86668826
URL: www.camce-rc.com
E-mail: info-res@camce.com.cn
Address: 27F, Tower A, GE World, No.888 Yingtian Street, Jianye District, Nanjing, Jiangsu, China.

China CAMC Engineering Hong Kong Co., Ltd

Phone: 010-82688149
Fax: 010-82688646
E-mail: hongkong@camce.com.cn
Address: Rms 2201-03 World-Wide House 19 Des Veoux Central Hongkong



Overseas Branch

Asia

China CAMC Engineering Co., Ltd., Azerbaijan Branch

Phone: 00994-505490589
E-mail: azerbaijan@camce.com.cn
Address: Khatai district, Khojaly 37, Demirchi Tower 415, Baku AZ1025, Azerbaijan

China CAMC Engineering Co., Ltd. Bangladesh Branch

Phone: 00880-1963328358
Fax: 00880-2-8824739
E-mail: bangladesh@camce.com.cn
Address: House No.20/E, Road No.13/C, Banani, Dhaka, Bangladesh

CAMCE Representative Office in Indonesia

Phone: 0062-21-27883517
Fax: 0062-21-27883520
E-mail: indonesia@camce.com.cn
Address: Satrio Tower, 15th Floor, Unit D Jl. Prof. Dr. Satrio Kav. C4 Jakarta 12950, Indonesia

China CAMC Engineering Co., Ltd. Kazakhstan Branch

Phone: 007-771-5985626
E-mail: kazakhstan@camce.com.cn
Address: Apartment 251, No.5/3 Abylai Khana Avenue, Almaty District, Astana 010000, Republic of Kazakhstan

CAMCE Representative Office in Laos

Phone: 00856-20-52846039
Fax: 00856-21-214950
E-mail: camcelao@camce.com.cn
Address: House No.134, Community No.9 Dongphaleab Village, Chantaboury District, Vientiane Capital, Lao P.D.R

CAMCE Investment (Lao) Co., Ltd.

Phone: 00856-21261600
E-mail: camceinvestmentlao@camce.com.cn
Address: Anouvong Rd, Unit6, Phiavat Village, Sisattanak District, Vientiane, Lao P.D.R.

Don Chan Palace Hotel

Phone: 00856-21226666
Fax: 00856-21244111-2
E-mail: info@donchanpalacelaopdr.com
Address: Unit 6, Piavat Village, Sisattanak District, Vientiane Capital, Lao P.D.R.

Luang Prabang Golf club

Tel: 00856-7-1-260912
E-mail: lpbgolfclub@gmail.com
Address: Ban Houiphai, Phatamnai, Khet Sankalok, Luang prabang Lao P.D.R.

CAMCE Mongolia Co., Ltd.

Phone: 0086-13522087525、00976-95761854
E-mail: mongolia@camce.com.cn
Address: Chingtei District, 2 Microdistrict, No. 4, Choimbol Street, Ulaanbaatar, Mongolia

China Camc Engineering Co., Ltd. Nepal Branch

Phone: 00977-9818159489
E-mail: nepal@camce.com.cn
Address: Narayanchaur, Naxal-01, Kathmandu, Nepal

China Camc Engineering Co., Ltd. Pakistan Branch

Phone: 0092-3086666340
E-mail: Pakistan@camce.com.cn
Address: House 529, Street 19, Sector N, Phsae 6, DHA, Lahore Pakistan

China CAMC Engineering Co., Ltd. Sri Lanka Branch

Phone: 0094-112577195
Fax: 0094-112577195
E-mail: srilanka@camce.com.cn
Address: No. 5A, West Tower, Seylan Towers. No.90, Galle Road, Colombo 03, Sri Lanka

CAMC Engineering Co., Ltd. Ankara Branch

Phone: 0090-5365962090
E-mail: ankara@camce.com.cn
Address: Konur Sokak No:58/1, Çankaya Ankara, Turkey

CAMCE Representative Office in Turkey

Phone: 0090-5458866599
E-mail: turkey@camce.com.cn
Address: No.155. building 3A, Vadistanbul Park. Istanbul, Turkey

China CAMC Engineering Co., Ltd. Turkmenistan Branch

Phone: 0086-13552711813
E-mail: turkmenistan@camce.com.cn
Address: 50/2, avenue 2028, Ashgabat, Turkmenistan

CAMCE Tashkent

Phone: 00998-903209488
E-mail: uzbekistan@camce.com.cn
Address: Amir Temur str. 107-B, Tashkent, Republic of Uzbekistan, 100084

China IPPR International Engineering Co. Ltd. Uzbekistan Office

Phone: 00998-909313821
E-mail: Uzbekistan_office@ippr.net
Address: 24, Pirmuhamedov Str., Mirabad District, Tashkent, Republic of Uzbekistan

CAMCE Logistics CO., LTD Uzbekistan Representative Office

Phone: 00998-909438666/00998-909806500
E-mail: CAMCEL_Tashkent@camce.com.cn
Address: st.Oybek 18/1, Mirabadskiy District, Tashkent, Republic of Uzbekistan

China CAMC Engineering Co., Ltd. Philippines Branch

Phone: 0063-2-77205336
Fax: 0063-2-76256640
E-mail: philippines@camce.com.cn
Address: 2104 West Tower, Tektite Towers, Exchange Road, Ortigas Center, Pasig City, Metro Manila, Philippines

China CAMC Engineering Company Limited (Myanmar Representative Office)

Phone: 0095-9-43081188
Fax: 0095-1-211805
E-mail: myanmar@camce.com.cn
Address: No.13/14, Bahosi Complex, Bogyoke Aung San Road, Lanmadaw Township, Yangon, Myanmar

Representative Office of China CAMC Engineering Co., Ltd. in Cambodia

Phone: 00855-15586618
E-mail: cambodia@camce.com.cn
Address: Skyline Apartments, No1B 205, St21, Sangkat Tonle Bassac, Khan Chamkarmon, Phnom Penh, Cambodia

China CAMC Engineering Co., Ltd. Kyrgyzstan Branch

Phone: 00996-550568957
E-mail: kyrgyzstan@camce.com.cn
Address: Str., Sagenbaya 164-7, Bishkek, Kyrgyzstan

China CAMC Engineering Co., Ltd. Iraq Branch

Phone: +964 7721309530
E-mail: iraq@camce.com.cn
Address: Arasat AlHindiya Mahalla 929 Street 15 No.8, Baghdad, Iraq

Africa

China CAMC Engineering Co., Ltd. Angola Branch

Phone: 00244-938836385
E-mail: angola@camce.com.cn
Address: Condomínio Mirantes de Talatona D08, Município de Belas, Luanda, Angola

CAMCE Zimbabwe (PVT) Ltd.

Phone: 00263-773256073
E-mail: zimbabwe@camce.com.cn
Address: No.66 Mount Pleasant Drive, Mount Pleasant, Harare, Zimbabwe

China CAMC Engineering Co., Ltd. Ivory Coast Branch

Phone: 00225-67599648
E-mail: Ivorycoast@camce.com.cn
Address: Abidjan, Plateau, rueA7 Pierre Semard

China CAMC Engineering Co., Ltd. Kenya Representative Office

Phone: 00254-115828393
E-mail: kenya@camce.com.cn
Address: Address: No.136, Fuchsia Close, Gigiri, Nairobi, Kenya

China CAMC Engineering Co., Ltd. Guinea Representative Office

Phone: 00224-626142733
E-mail: guinea@camce.com.cn
Address: Hotel Grand Ami, No.5 Road Sandervalia, Kaloum, Conakry, Guinea

CAMCE Nigeria Limited

Phone: 00234-8096296369
E-mail: nigerialimited@camce.com.cn
Address: No.23, Kumasi Crescent, Wuse2, Abuja, Nigeria

China CAMC Engineering Co., Ltd. Mauritania Branch

Phone: 00222-41377890
E-mail: mauritania@camce.com.cn
Address: Tevragh Zeina, Nouakchott, Mauritania

China CAMC Engineering Co., Ltd. Succursale du Cameroun

Phone: 00237-655312647
E-mail: cameroun@camce.com.cn
Address: B.P.35300, Nylon Bastos, A côté de Tradex, Yaoundé, Cameroun

China CAMC Engineering Co., Ltd. South Sudan Branch

Phone: 00211-9133678787
E-mail: south-sudan@camce.com.cn
Address: Juba town Panorama Hotel, Juba, South Sudan

China CAMC Engineering Co., Ltd. Ethiopia Branch

Phone: 00251-944264284
E-mail: ethiopia@camce.com.cn
Address: House No. 2173, Woreda 03, Nefas Silk Lafto Sub City, Addis Ababa, Ethiopia

China CAMC Engineering Co., Ltd. Chad Representative Office

Phone: 00235-63137450
E-mail: chad@camce.com.cn
Address: Mobutu Joseph Désiré Road, Sabongali Community, sixth District, N'Djaména, Republic of Chad

China CAMC Engineering Co., Ltd. Zambia Representative Office

Phone: 00260-971591460
E-mail: zambia@camce.com.cn
Address: 14C Serval Road Kabulonga, Lusaka, Zambia

China CAMC Engineering Co., Ltd. Tanzania Branch

Phone: 00255-628881212
E-mail: tanzania@camce.com.cn
Address: The Palm Residency, Plot No.45/46, Chimara Road, Dar es Salaam, Tanzania

China CAMC Engineering Co., Ltd. Uganda Representative Office

Phone: 00256-773978168
E-mail: uganda@camce.com.cn
Address: Plot3-11 Akii Bua Close, Nakasero, Kampala, Uganda

America

China CAMC Engineering Co., Ltd. Panama Branch

Phone: 00507-3858831
E-mail: panama@camce.com.cn
Address: Oficina 806, Piso 8, Torre Banisi, Calle 58 este, Obarrio, Ciudad de Panamá, Panamá

China CAMC Engineering Co., Ltd. Bolivia Branch

Phone: 00591-2-2971584
E-mail: bolivia@camce.com.cn
Address: Piso 5, Oficina 5A, Edificio Calacoto Business Center, Calle 13 Esq. Sanchez Bustamante No.7977, Zona Calacoto, La Paz, Bolivia

China CAMC Engineering Co., Ltd. Chile Branch

Phone: 0056-2-24879800
E-mail: chile@camce.com.cn
Address: Enrique Foster Norte 0115, las Condes, Santiago, Chile

China CAMC Engineering Co., Ltd. Colombia Branch

Phone: 0057-3214900546
E-mail: colombia@camce.com.cn
Address: 502, Torre 2, Cra.7A#90-33, Chico, Bogota, Columbia

China IPPR International Engineering Co. Ltd. Dominica Branch

Phone: 001829-6517234
E-mail: Dominica_office@ippr.net
Address: Edificio FB Building, Av. Sarasota No.55, Bella Vista, Santo Domingo, Dominica

CAMCE Representative Office in Cuba

Phone: 0053-72043620/21/22
E-mail: cuba@camce.com.cn
Address: Calle 62 No. 510, e/ 5ta-A y 5ta-B, Miramar; Playa, La Habana, Cuba

China CAMC Engineering Co., Ltd. Guyana Branch

E-mail: guyana@camce.com.cn
Phone: 00592-6823211
Address: Lot 5C, Le Ressenvenir, East Coast Demerara, Guyana

CAMCE Holding Inc.

Phone: 001-604-2918082/604-2963476
Fax: 001-604-2918082
E-mail: canada@camce.com.cn
Address: 108-4664 Lougheed Highway, Burnaby, BC Canada V5C 5T5

Oasys Holding Inc.

E-mail: info@oasyswater.com
Address: State of California, USA

China CAMC Engineering Co., Ltd. Venezuela Branch

Phone: 0058-212-9533589/9531942/9536550
Fax: 0058-212-9532201
E-mail: venezuela@camce.com.cn
Address: Av. Francisco de Miranda, Centro Lido, Torre E, Piso 11&12, Oficina Única, Caracas, Venezuela, Zona Postal 1060

Proyectos y Construcciones CAMCE, SAPI de CV

Phone: 0052-1-5556587149/56588002
E-mail: mexico@camce.com.cn
Address: San Pedro 101, Col. Juarez, Del. Coyoacan, Ciudad de México, México, C.P.04100

CAMCE Nicaragua, S.A.

Phone: 00505-22323565
E-mail: nicaragua@camce.com.cn
Address: Módulo A-807, Piso 8vo, Torre A, Edificio Centro de Negocio KAKAÚ, Camino de Oriente, Managua, Nicaragua.

China CAMC Engineering Co., Ltd. Sucursal Perú

Photo: 0051-991163085
E-mail: camceperu@camce.com.pe
Address: Av. Javier Prado Este Nro 560 Int. 2104, San Isidro, Lima, Peru

China CAMC Engineering Co., Ltd. Ecuador Branch

Phone: 00593-995461116
E-mail: ecuador@camce.com.cn
Address: Oficina 1001, Edificio Suyana, Av. República del Salvador N36-213 y Naciones Unidas, Quito, Ecuador

CAMCE SUDAMÉRICA, C.A.

Phone: 0058-212-9533589/9531942/9536550
Fax: 0058-212-9532201
E-mail: camcesudamerica@camce.com.cn
Address: Av. Francisco de Miranda, Centro Lido, Torre E, Piso 11&12, Oficina Única, Caracas, Venezuela, Zona Postal 1060

Procon Holdings Inc.

Phone: 001-604-2918082
Fax: 001-604-2918082
E-mail: info@procongroup.com
Address: 108-4664 Lougheed Highway, Burnaby, BC Canada V5C 5T5

Europe

Representative Office of CAMCE in Central and Eastern Europe

Phone: 0086-13718758265
Email: cee@camce.com.cn
Address: ul. Grzybowska 2 lok. 29, 00-131 Warszawa, Poland

CAMCE Representative Office in Belarus

Phone: 00375-296819288/296112172
E-mail: camceby@camce.com.cn
Address: 18-2 Pekinskii Ave, Industrial park "Great Stone" Belarus

Sinomach Belarus Co., Ltd (SINOMACHBEL)

Phone: 00375-291266139
E-mail: sinomachbel@yandex.by
Address: 18-1 Pekinskii Ave, Industrial park "Great Stone" Belarus
222210

China CAMC Engineering Co., Ltd. Russia Branch

Phone: 007-985-3156647
Fax: 007-499-6438460
E-mail: moscowbranch@camce.com.cn
Address: MFC«FederationTowerEast» Presnenskaya naberezhnaya, 12,31floor, O office, Moscow, 123100, Russian Federation

China CAMC Engineering Co., Ltd. Samara Branch

Phone: 007-985-1232491
E-mail: samarabrand@camce.com.cn
Address: office 206,Nº8, Kommunisticheskaya Street, Komsomolsky District, Togliatti City, Samara Region, Russian Federation

China CAMC Engineering Co., Ltd. Branch in Finland

Phone: 00358-505522903
Email: Finland@camce.com.cn
Address: Eteläesplanadi 2 00130 Helsinki, Finland

Oceania

China CAMC Engineering (PNG) Co., Ltd.

Phone: 00675-73769511
E-mail: png@camce.com.cn
Address: Rosewood Apartment 1, Savannah Heights, Section 531, Allotment 29, Hohola, NCD